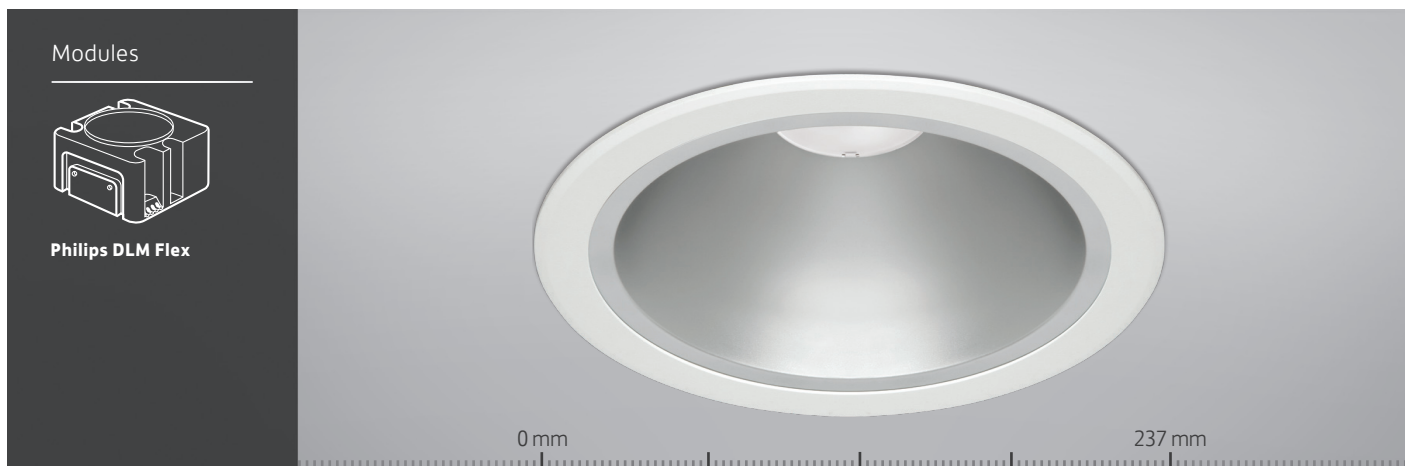


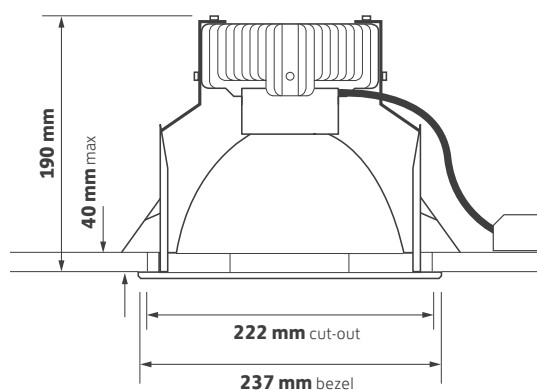
100 Series Datasheet



Key Features

- ▶ Large 237 mm die-cast bezel with UB option for a wide range of accessories
- ▶ Satin etched reflector
- ▶ Matched with Philips Xitanium drivers for optimum performance
- ▶ IP65 bezel options
- ▶ Dimming and emergency conversion options
- ▶ Life >60,000 hours (L70 B10)

Technical Drawing



Ordering Information

Module Output	Power	Colour	Model Ref.
1100 lm	15 W	830	100.1100.30
1100 lm	15 W	840	100.1100.40
2000 lm	25 W	830	100.2000.30
2000 lm	25 W	840	100.2000.40
3000 lm	34 W	830	100.3000.30
3000 lm	34 W	840	100.3000.40
4100 lm	49 W	830	100.5000.30
4100 lm	49 W	840	100.5000.40

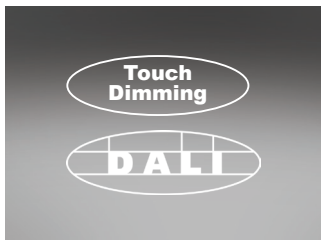
Please select from the options below.

Touch dimming / DALI	/T+DALI
Universal bezel	/UB
EM conversion	/EM
Self-test EM conversion	/EMS
DALI EM conversion	/EMD
Integral indicator for EM conversion	I
Single Point Connection to an ILEM product	/SPC
Please see accessories sheet	Accessories

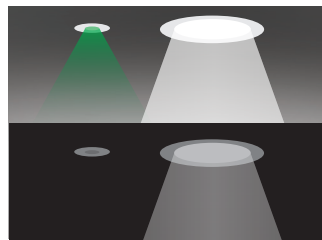


100 Series Options and Accessories

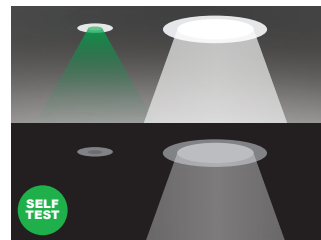
Options



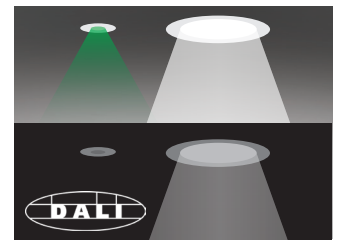
T+DALI
Touch dimming / DALI



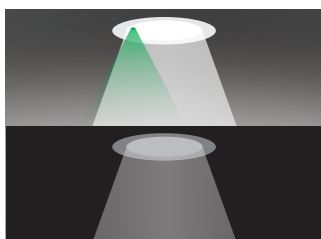
/EM
EM conversion



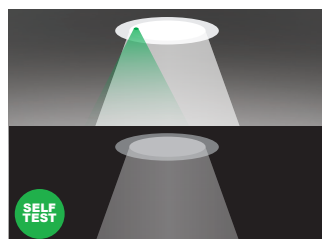
/EMS
Self-test EM conversion



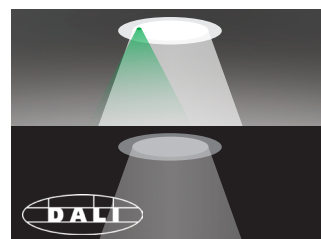
/EMD
DALI EM conversion



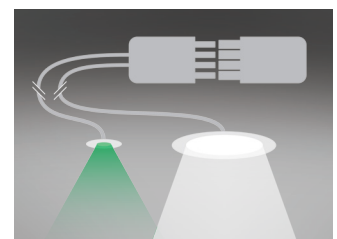
EMI
Integral indicator for EM conversion



EMSI
Integral indicator for self-test EM conversion



EMDI
Integral indicator for DALI EM conversion



/SPC
Single Point Connection to an ILEM product



/UB
Universal bezel to accept accessories

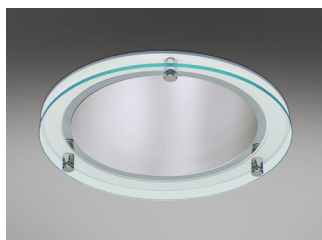
100 Series Options and Accessories

Decorative Glass

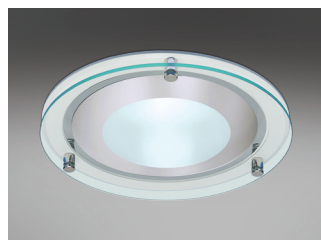
Please specify with universal bezel /UB



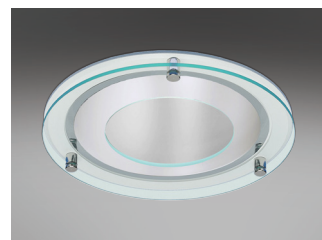
DG001/240
Outer etched glass



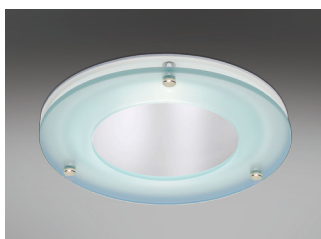
DG002/240
Clear glass



DG003/240
Centre etched glass



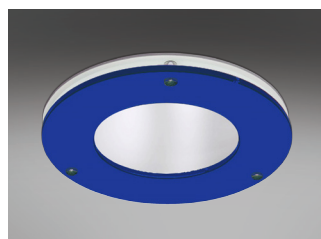
DG005/240
Clear halo glass



DG006/240
Etched halo glass



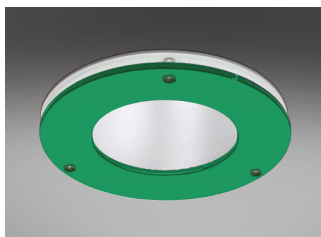
DG007/240
Fully etched glass



DG012/240
Blue acrylic halo



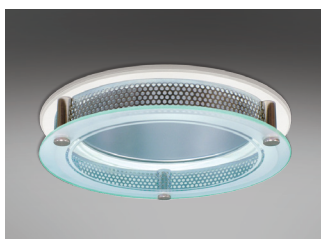
DG013/240
Red acrylic halo



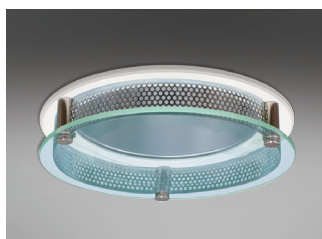
DG014/240
Green acrylic halo

Corona Glass

Please specify with universal bezel /UB



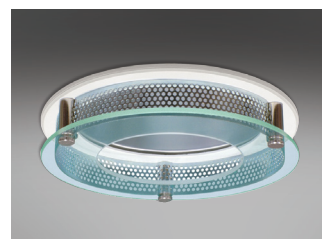
CG001/240
Outer etched glass



CG002/240
Clear glass



CG003/240
Centre etched glass

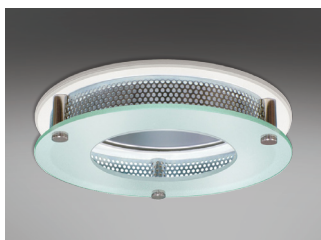


CG005/240
Clear halo glass

100 Series Options and Accessories

Corona Glass

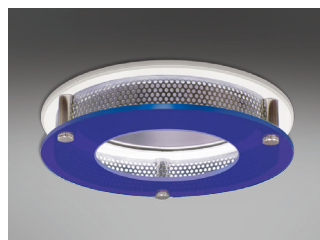
Please specify with universal bezel /UB



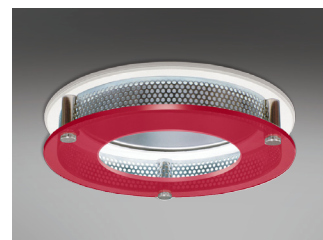
CG006/240
Etched halo glass



CG007/240
Fully etched glass



CG012/240
Blue acrylic halo



CG013/240
Red acrylic halo



CG014/240
Green acrylic halo

IP65 Bezel

Please specify with universal bezel /UB



IP65/002/240
IP65 clear glass



IP65/008/240
IP65 opal polycarbonate



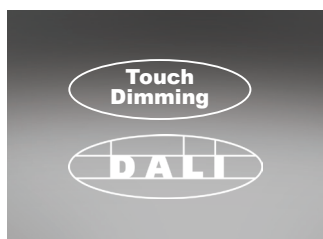
IP65/009/240
IP65 clear polycarbonate



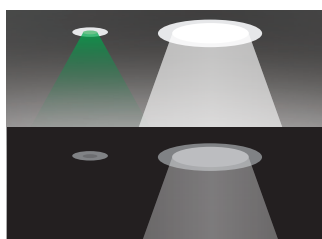
GF008 / GF010
Anti-tamper driver / Anti-tamper bit
for IP65 bezel

100 Series Options and Accessories

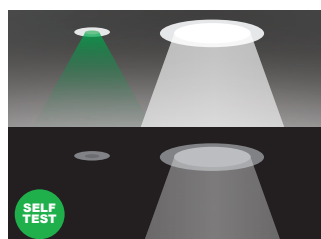
Options



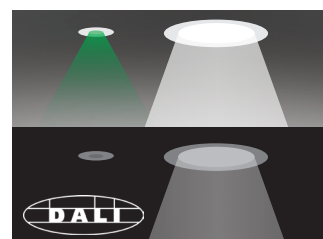
T+DALI
Touch dimming / DALI



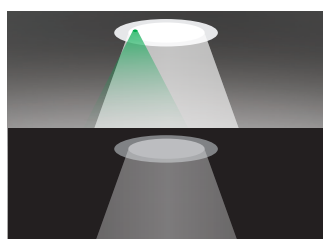
/EM
EM conversion



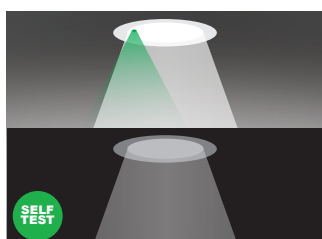
/EMS
Self-test EM conversion



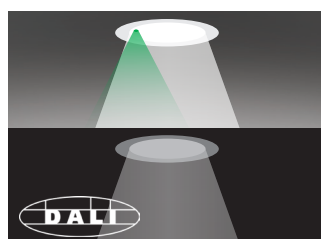
/EMD
DALI EM conversion



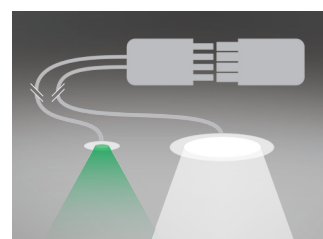
EMI
Integral indicator for EM conversion



EMSI
Integral indicator for self-test EM conversion



EMDI
Integral indicator for DALI EM conversion



/SPC
Single Point Connection to an ILEM product

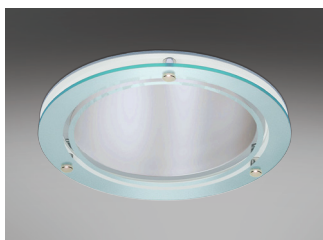


/UB
Universal bezel to accept accessories

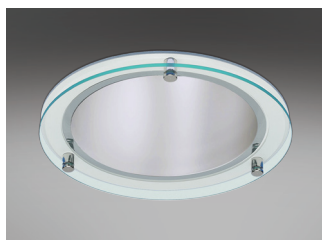
100 Series Options and Accessories

Decorative Glass

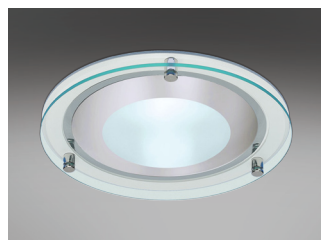
Please specify with universal bezel /UB



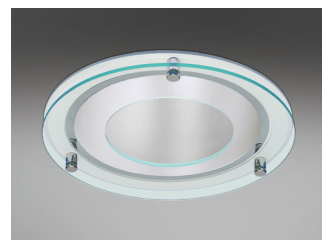
DG001/240
Outer etched glass



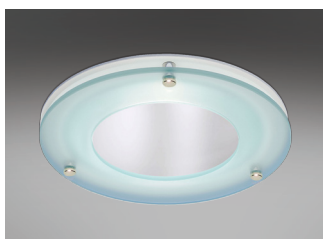
DG002/240
Clear glass



DG003/240
Centre etched glass



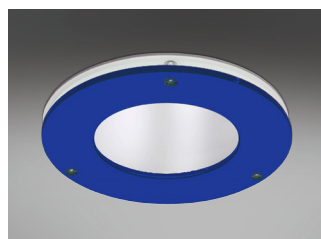
DG005/240
Clear halo glass



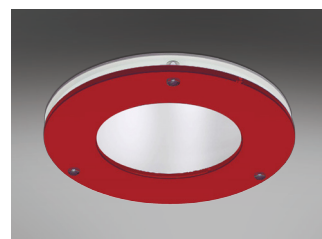
DG006/240
Etched halo glass



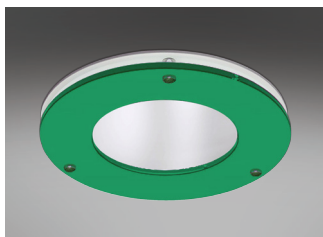
DG007/240
Fully etched glass



DG012/240
Blue acrylic halo



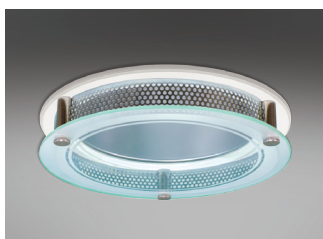
DG013/240
Red acrylic halo



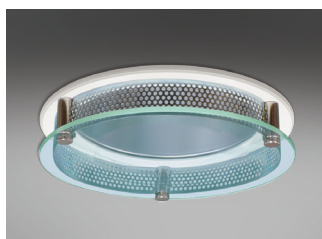
DG014/240
Green acrylic halo

Corona Glass

Please specify with universal bezel /UB



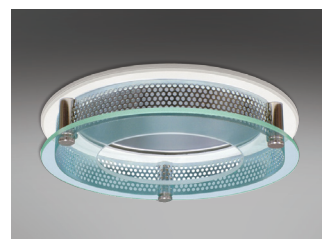
CG001/240
Outer etched glass



CG002/240
Clear glass



CG003/240
Centre etched glass

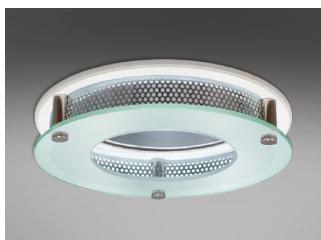


CG005/240
Clear halo glass

100 Series Options and Accessories

Corona Glass

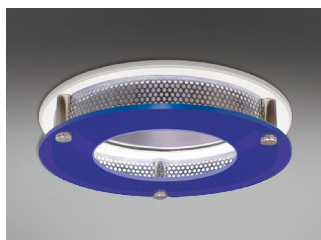
Please specify with universal bezel /UB



CG006/240
Etched halo glass



CG007/240
Fully etched glass



CG012/240
Blue acrylic halo



CG013/240
Red acrylic halo



CG014/240
Green acrylic halo

IP65 Bezel

Please specify with universal bezel /UB



IP65/002/240
IP65 clear glass



IP65/008/240
IP65 opal polycarbonate



IP65/009/240
IP65 clear polycarbonate



GF008 / GF010
Anti-tamper driver / Anti-tamper bit
for IP65 bezel

100 Series Technical

Technical Information

Nominal weight	1.3 kg	Operating ambient temperature	-25°C to +35°C
Mains voltage	220 - 240 V	Mains lead	500 mm 2 core LSF
Mains frequency	50 - 60 Hz	Dimming lead	500 mm 2 core LSF
Ingress protection from front	IP20	Warranty	5 years
Ingress protection from rear	IP20	Power factor	>0.9
Optical efficiency (DLOR)	92%	Colour rendering	R _a 80
MacAdam	3 SDCM		

Model Ref.	Luminaire Power (W)	Module Output (lm)	Module Efficacy (lm/W)	Luminaire Output (Llm)	Luminaire Efficacy (Llm/W)	Colour Temp (K)	UGR
100.1100.30	14.8	1133	76.6	1042	70.4	3000	14.0
100.1100.40	14.9	1237	83.0	1138	76.4	4000	14.0
100.2000.30	24.9	1935	77.7	1780	71.5	3000	15.0
100.2000.40	24.9	2117	85.0	1948	78.2	4000	16.0
100.3000.30	33.7	2820	83.7	2594	77.0	3000	17.0
100.3000.40	33.7	3078	91.3	2832	84.0	4000	17.0
100.5000.30	48.5	3966	81.7	3649	75.2	3000	18.0
100.5000.40	48.6	4329	89.0	3983	81.9	4000	18.0

Please note: Specification values may change due to rapid development of lighting technology. All performance data is taken at an ambient temperature of +25°C. Data may be rounded up/down for illustrative purposes. Tolerance range of optical and electrical data is +/-10%. We reserve the right to amend or change details without prior notification. E&OE. **MDS-138T-REV4 01/07/2016**

100 Series Life

25°C Ta (Ambient Temperature)

Model Ref.	L90 / B10	L80 / B10	L70 / B10
100.1100.30	20,000 h	43,000 h	>60,000 h
100.1100.40	20,000 h	43,000 h	>60,000 h
100.2000.30	20,000 h	43,000 h	>60,000 h
100.2000.40	20,000 h	43,000 h	>60,000 h
100.3000.30	19,000 h	40,000 h	>60,000 h
100.3000.40	19,000 h	40,000 h	>60,000 h
100.5000.30	19,000 h	40,000 h	>60,000 h
100.5000.40	19,000 h	40,000 h	>60,000 h

“L VALUE” = % of initial lumens maintained after specified time
“B VALUE” = % of fittings that will have depreciated below the L value after specified time

EXAMPLE
50,000 hrs L70 / B50 = 70% of initial lumens maintained after 50,000 hours
= 50% of fittings will have depreciated below 70% of the initial lumens after 50,000 hours
OR
= 50% of fittings will have maintained 70% of the initial lumens after 50,000 hours