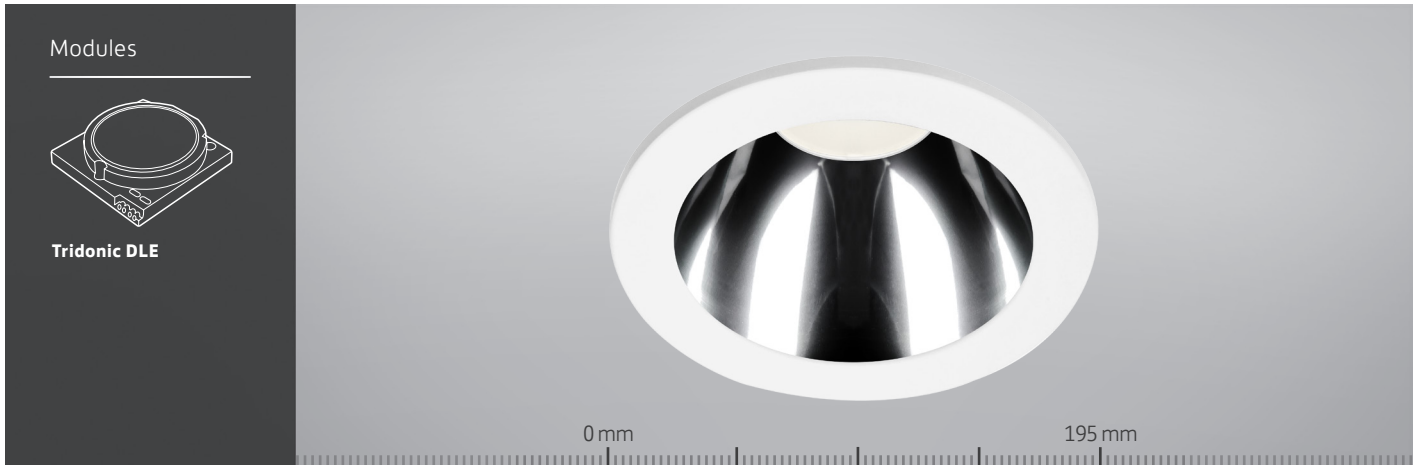


107 Series Datasheet



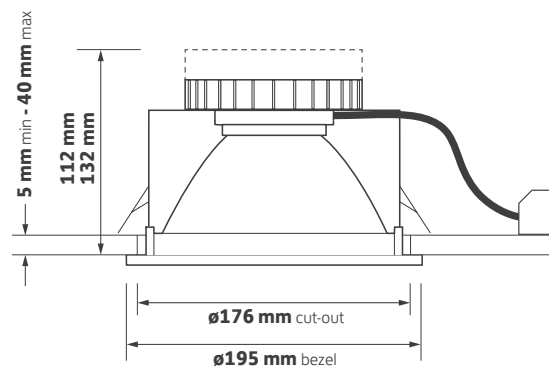
Key Features

- ▶ Die-cast twist and lock bezel with interchangeable accessories
- ▶ Highly specular reflector
- ▶ Outstanding module efficacy of up to 123.2 lm/W
- ▶ Various dimming options
- ▶ Emergency conversion options
- ▶ Life up to 50,000 hours (L90 / F10)
- ▶ 5 year warranty 50,000 hours
- ▶ Short circuit, overload and temperature protection
- ▶ Comes with 500 mm supply lead

Ordering Information

Output	Power	Colour	Model Ref.
1075 lm	10 W	830	107.2001
1075 lm	10 W	840	107.2003
1850 lm	17 W	830	107.3001
1850 lm	18 W	840	107.2004
1850 lm	20 W	830	107.2002
1850 lm	18 W	840	107.3003
2750 lm	30 W	830	107.3002
2750 lm	27 W	840	107.3004

Technical Drawing



Options

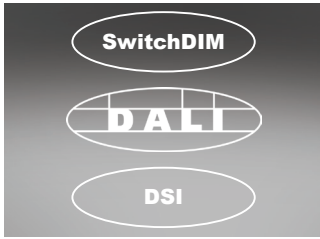
Please select from the options below.

TA300 bezel options	/WH /CH /BA
IP65 bezel option	/65
SwitchDIM, DALI or DSI	/ECO
EM conversion	/EM
Self-test EM conversion	/EMS
DALI EM conversion	/EMD
Integral indicator for EM conversion	I
Single Point Connection to an ILEM	/SPC
Please see accessories sheet	Accessories

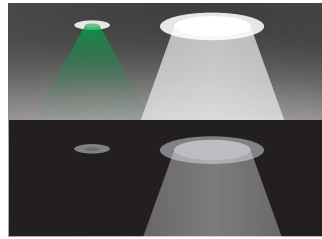


107 Series Options and Accessories

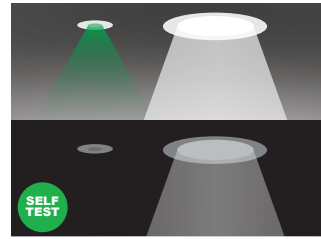
Options



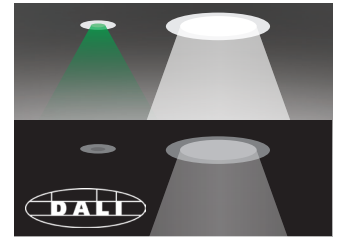
/ECO
SwitchDIM, DALI or DSI



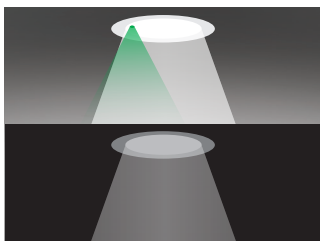
/EM
EM conversion



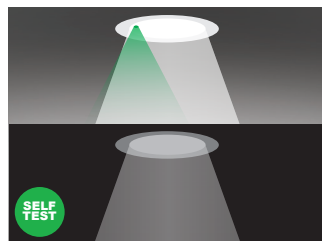
/EMS
Self-test EM conversion



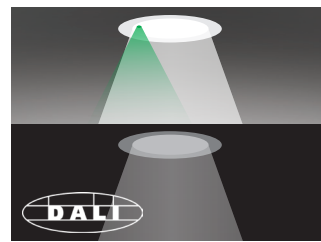
/EMD
DALI EM conversion



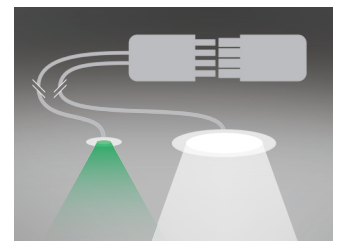
/EMI
Integral indicator for EM conversion



/EMSI
Integral indicator for self-test EM conversion



/EMDI
Integral indicator for DALI EM conversion



/SPC
Single Point Connection to an ILEM product

107 Series Options and Accessories

Bezel Finish



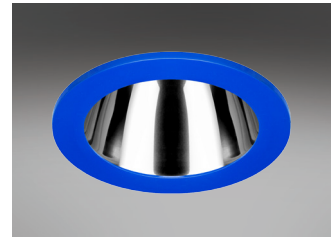
TA300/WH
White bezel - RAL9010



TA300/CH
Chrome bezel



TA300/BA
Brushed aluminium bezel



Product variations
Other colours and specifications available on request



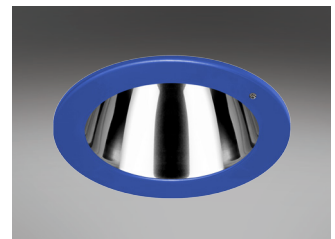
AT300/WH
White anti-tamper bezel



AT300/CH
Chrome anti-tamper bezel



AT300/BA
Brushed aluminium anti-tamper bezel



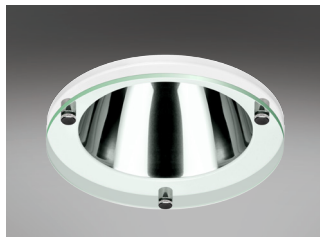
Product variations
Other colours and specifications available on request

Decorative Bezel

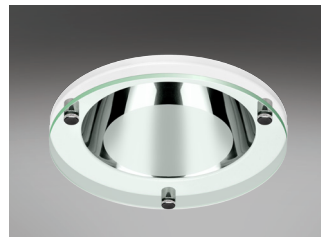
White /WH Chrome /CH Brushed Aluminium /BA



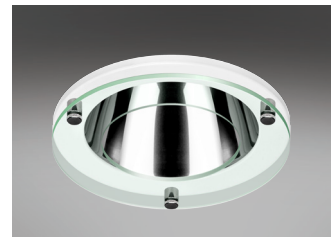
TA301
White bezel complete with outer etched glass



TA302
White bezel complete with clear glass



TA303
White bezel complete with centre etched glass



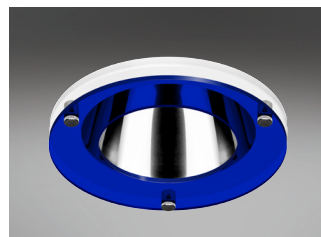
TA305
White bezel complete with clear halo glass



TA306
White bezel complete with etched halo glass



TA307
White bezel complete with fully etched glass



TA312
White bezel complete with blue acrylic halo

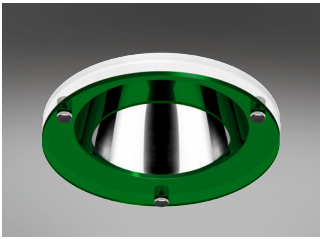


TA313
White bezel complete with red acrylic halo

107 Series Options and Accessories

Decorative Bezel

Continued



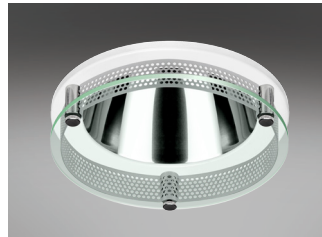
TA314
White bezel complete with green acrylic halo

Corona Bezel

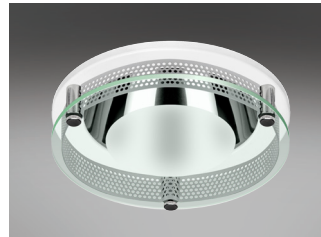
White /WH Chrome /CH Brushed Aluminium /BA



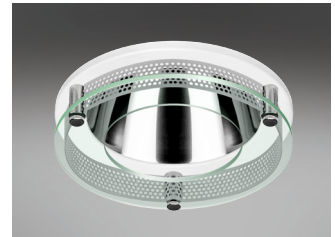
CB301
White corona bezel with outer etched glass



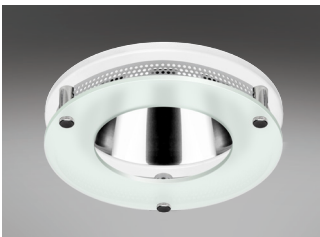
CB302
White corona bezel with clear glass



CB303
White corona bezel with centre etched glass



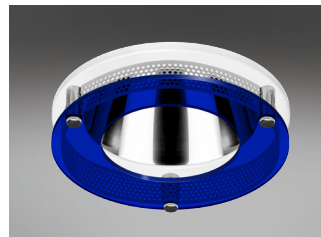
CB305
White corona bezel with clear halo glass



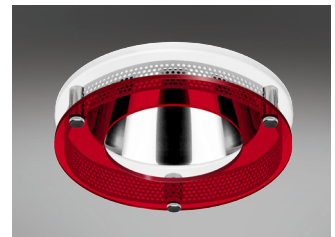
CB306
White corona bezel with etched halo glass



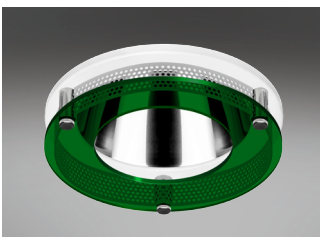
CB307
White corona bezel with fully etched glass



CB312
White corona bezel with blue acrylic halo



CB313
White corona bezel with red acrylic halo



CB314
White corona bezel with green acrylic halo

107 Series Options and Accessories

IP65 Bezel



/65
IP65 Bezel option



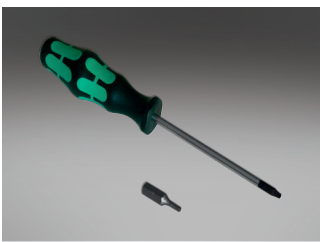
IP65/002/195
IP65 Clear glass



IP65/008/195
IP65 Opal polycarbonate



IP65/009/195
IP65 Clear polycarbonate



GF008 / GF010
Anti-tamper driver / Anti-tamper bit
for IP65 bezel

Accessories



TA351
Etched glass mini reflector



TA352/BLUE
Blue lens mini reflector



TA352/RED
Red lens mini reflector



TA352/GREEN
Green lens mini reflector



TA310/FROST
Frosted vertical halo



TA310/BLUE
Blue vertical halo



TA340
IP54 Clear glass



TA341
IP54 Centre etched glass

107 Series Options and Accessories

Accessories

Continued



TA342
IP54 Full etched glass



TA343
IP54 Clear polycarbonate



TA344
IP54 Opal polycarbonate



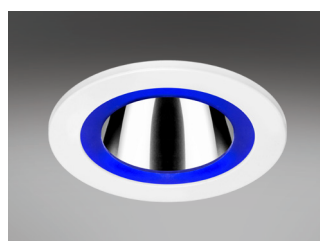
TA316
IP54 Glass scatter dome



TA317
IP44 Prismatic lens



TA384
Frosted hi-light



TA385
Blue hi-light



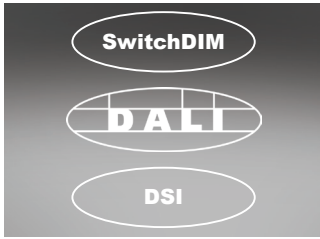
GF208 / GF218
Anti-tamper driver / Anti-tamper bit



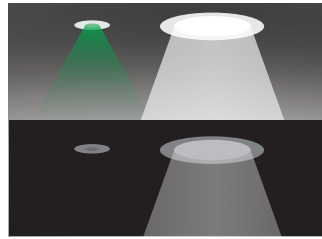
HALOKIT.002
Halo kit - maximum cut-out 250 mm

107 Series Options and Accessories

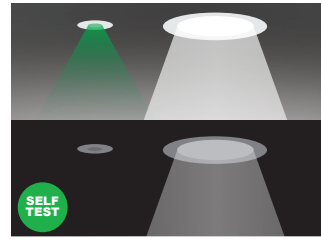
Options



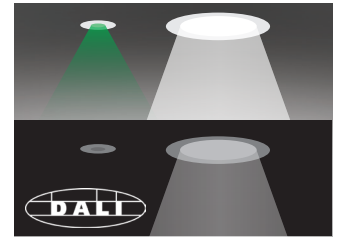
/ECO
SwitchDIM, DALI or DSI



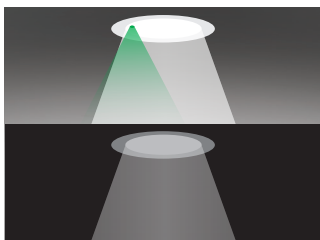
/EM
EM conversion



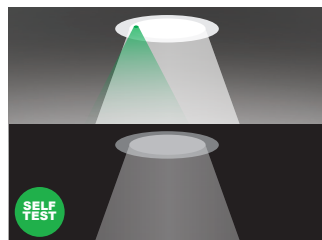
/EMS
Self-test EM conversion



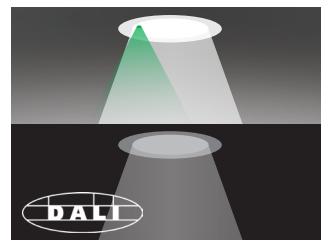
/EMD
DALI EM conversion



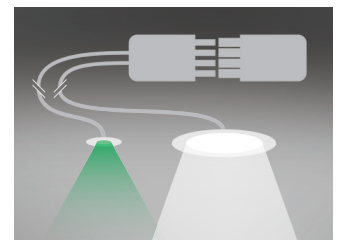
/EMI
Integral indicator for EM conversion



/EMSI
Integral indicator for self-test EM conversion



/EMDI
Integral indicator for DALI EM conversion



/SPC
Single Point Connection to an ILEM product

107 Series Options and Accessories

Bezel Finish



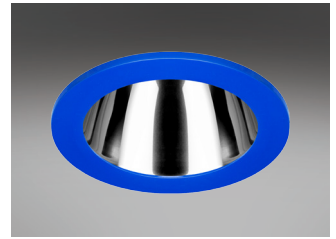
TA300/WH
White bezel - RAL9010



TA300/CH
Chrome bezel



TA300/BA
Brushed aluminium bezel



Product variations
Other colours and specifications
available on request



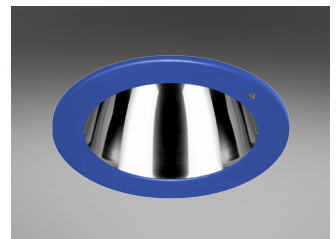
AT300/WH
White anti-tamper bezel



AT300/CH
Chrome anti-tamper bezel



AT300/BA
Brushed aluminium anti-tamper bezel



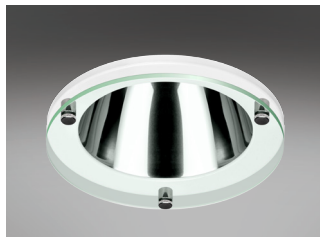
Product variations
Other colours and specifications
available on request

Decorative Bezel

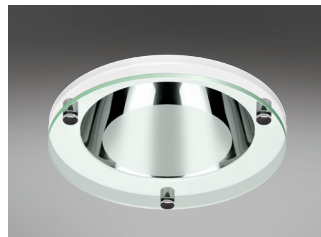
White /WH Chrome /CH Brushed Aluminium /BA



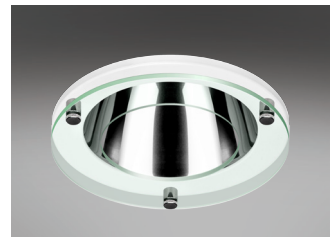
TA301
White bezel complete with outer
etched glass



TA302
White bezel complete with clear glass



TA303
White bezel complete with centre
etched glass



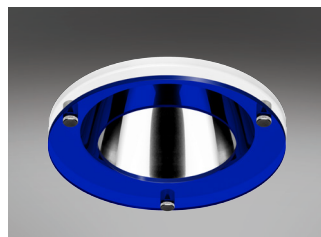
TA305
White bezel complete with clear halo
glass



TA306
White bezel complete with etched
halo glass



TA307
White bezel complete with fully
etched glass



TA312
White bezel complete with blue
acrylic halo

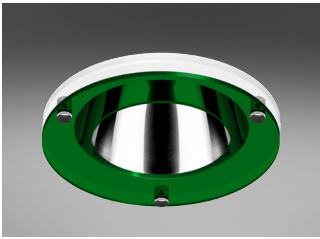


TA313
White bezel complete with red acrylic
halo

107 Series Options and Accessories

Decorative Bezel

Continued



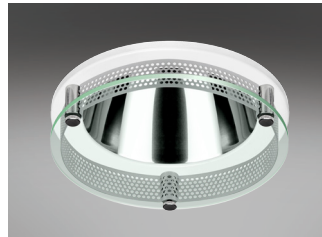
TA314
White bezel complete with green acrylic halo

Corona Bezel

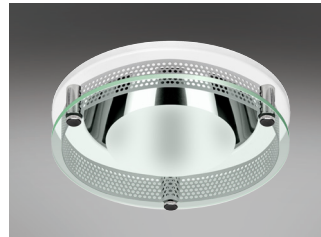
White /WH Chrome /CH Brushed Aluminium /BA



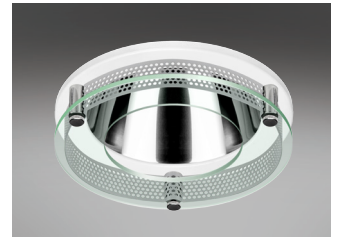
CB301
White corona bezel with outer etched glass



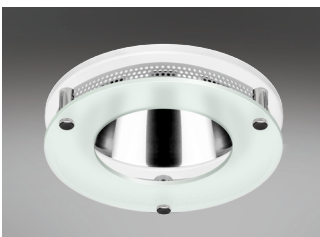
CB302
White corona bezel with clear glass



CB303
White corona bezel with centre etched glass



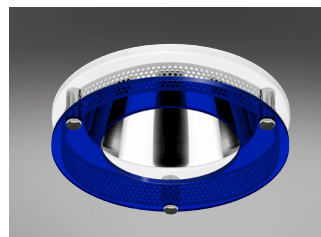
CB305
White corona bezel with clear halo glass



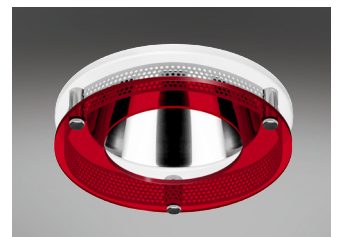
CB306
White corona bezel with etched halo glass



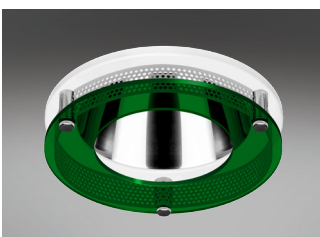
CB307
White corona bezel with fully etched glass



CB312
White corona bezel with blue acrylic halo



CB313
White corona bezel with red acrylic halo



CB314
White corona bezel with green acrylic halo

107 Series Options and Accessories

IP65 Bezel



/65
IP65 Bezel option



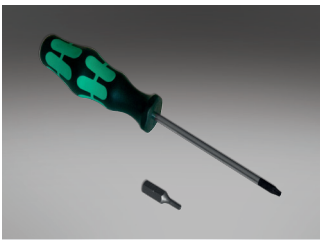
IP65/002/195
IP65 Clear glass



IP65/008/195
IP65 Opal polycarbonate



IP65/009/195
IP65 Clear polycarbonate



GF008 / GF010
Anti-tamper driver / Anti-tamper bit
for IP65 bezel

Accessories



TA351
Etched glass mini reflector



TA352/BLUE
Blue lens mini reflector



TA352/RED
Red lens mini reflector



TA352/GREEN
Green lens mini reflector



TA310/FROST
Frosted vertical halo



TA310/BLUE
Blue vertical halo



TA340
IP54 Clear glass



TA341
IP54 Centre etched glass

107 Series Options and Accessories

Accessories

Continued



TA342
IP54 Full etched glass



TA343
IP54 Clear polycarbonate



TA344
IP54 Opal polycarbonate



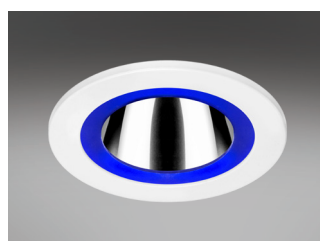
TA316
IP54 Glass scatter dome



TA317
IP44 Prismatic lens



TA384
Frosted hi-light



TA385
Blue hi-light



GF208 / GF218
Anti-tamper driver / Anti-tamper bit



HALOKIT.002
Halo kit - maximum cut-out 250 mm

107 Series Technical

Technical Information

Nominal weight	1.8 kg	Operating ambient temperature	-25°C to +35°C
Mains voltage	220 - 240 V	Mains lead	500 mm LSF
Mains frequency	50 - 60 Hz	Dimming lead	500 mm 2 core LSF
Ingress protection from front	IP20	Warranty	5 years
Ingress protection from rear	IP20	Power factor	>0.9
Optical efficiency (DLOR)	92%	Colour rendering	R_a 80
MacAdam	3 SDCM		

Model Ref.	Module Power (W)	Module Output (lm)	Module Efficacy (lm/W)	Luminaire Power (W)	Luminaire Output (lm)	Luminaire Efficacy (lm/W)	Colour Temp (K)	UGR
107.2001	8.8	1119	113.0	9.9	1029	104.0	3000	14.6
107.2003	8.2	1220	123.2	9.9	1122	113.4	4000	14.9
107.3001	17.6	1917	110.1	17.4	1763	101.3	3000	16.4
107.2004	15.9	2050	113.3	18.1	1886	104.2	4000	16.7
107.2002	17.2	1996	101.9	19.6	1837	93.7	3000	16.6
107.3003	15.6	2090	119.4	17.5	1923	109.9	4000	16.7
107.3002	26.3	2960	98.7	30.0	2723	90.8	3000	17.9
107.3004	24.1	3012	109.9	27.4	2771	101.1	4000	18.0

107 Series Life

25°C Ta (Ambient Temperature)

Model Ref.	L90 / F10	L80 / F10	L70 / F10
107.2001	>50,000 h	>50,000 h	>50,000 h
107.2003	>50,000 h	>50,000 h	>50,000 h
107.3001	>50,000 h	>50,000 h	>50,000 h
107.3003	>50,000 h	>50,000 h	>50,000 h
107.2002	42,600 h	>50,000 h	>50,000 h
107.2004	42,600 h	>50,000 h	>50,000 h
107.3002	41,400 h	42,000 h	>50,000 h
107.3004	41,400 h	42,000 h	>50,000 h

“**L VALUE**” = % of initial lumens maintained after specified time

“**F VALUE**” = % of fittings failing to meet operational expectations after specified time

EXAMPLE

- 60,000 hrs L80 / F10 = 80% of initial lumens maintained after 60,000 hours
= 10% of fittings will have less than 80% of initial lumens after 60,000 hours
OR
= 90% of fittings will have maintained 80% of initial lumens after 60,000 hours