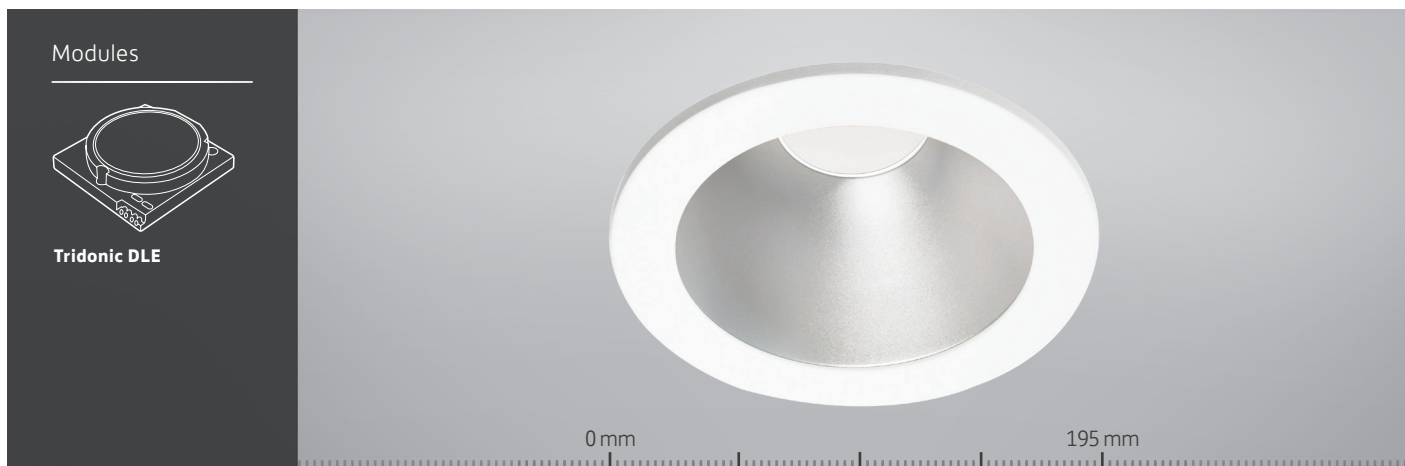


# 110 Series Datasheet



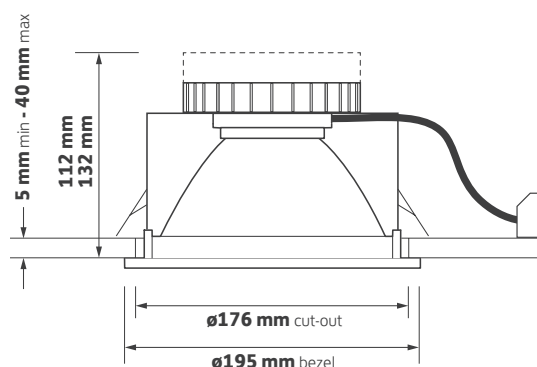
## Key Features

- ▶ Die-cast twist and lock bezel with interchangeable accessories
- ▶ Satin etched reflector
- ▶ Outstanding module efficacy of up to 119.4 lm/W
- ▶ Various dimming options
- ▶ Emergency conversion options
- ▶ Life up to 50,000 hours (L90 / F10)
- ▶ 5 year warranty 50,000 hours
- ▶ Short circuit, overload and temperature protection
- ▶ Comes with 500 mm supply lead

## Ordering Information

| Output  | Power | Colour | Model Ref.      |
|---------|-------|--------|-----------------|
| 1025 lm | 11 W  | 830    | <b>110.2001</b> |
| 1025 lm | 11 W  | 840    | <b>110.2003</b> |
| 1750 lm | 18 W  | 830    | <b>110.3001</b> |
| 1750 lm | 18 W  | 840    | <b>110.3003</b> |
| 1750 lm | 21 W  | 830    | <b>110.2002</b> |
| 1750 lm | 21 W  | 840    | <b>110.2004</b> |
| 2600 lm | 30 W  | 830    | <b>110.3002</b> |
| 2600 lm | 27 W  | 840    | <b>110.3004</b> |

## Technical Drawing



## Options

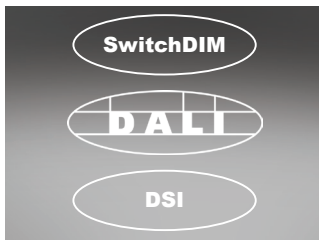
Please select from the options below.

|                                      |                    |
|--------------------------------------|--------------------|
| TA300 bezel options                  | <b>/WH /CH /BA</b> |
| IP65 bezel option                    | <b>/65</b>         |
| SwitchDIM, DALI or DSI               | <b>/ECO</b>        |
| EM conversion                        | <b>/EM</b>         |
| Self-test EM conversion              | <b>/EMS</b>        |
| DALI EM conversion                   | <b>/EMD</b>        |
| Integral indicator for EM conversion | <b>I</b>           |
| Single Point Connection to an ILEM   | <b>/SPC</b>        |
| Integral connection to ILEM          | <b>/SPCI</b>       |
| Please see accessories sheet         | <b>Accessories</b> |

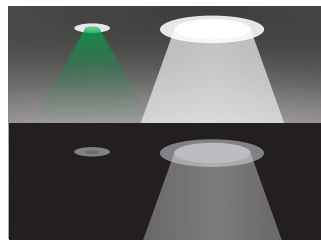


# 110 Series Options and Accessories

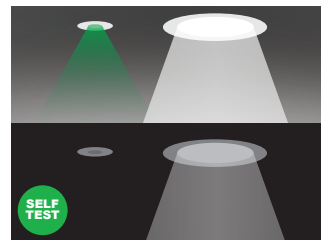
## Options



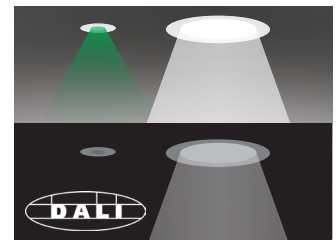
**/ECO**  
SwitchDIM, DALI or DSI



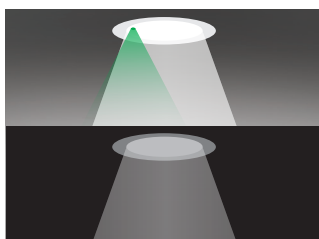
**/EM**  
EM conversion



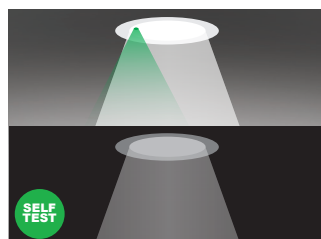
**/EMS**  
Self-test EM conversion



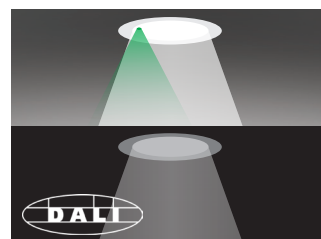
**/EMD**  
DALI EM conversion



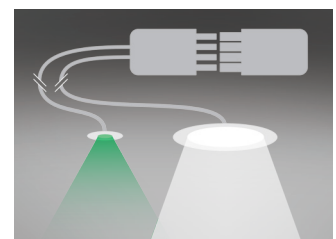
**/EMI**  
Integral indicator for EM conversion



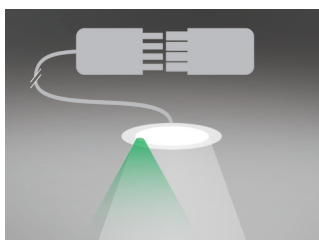
**/EMSI**  
Integral indicator for self-test EM conversion



**/EMDI**  
Integral indicator for DALI EM conversion



**/SPC**  
Single Point Connection to an ILEM product



**/SPCI**  
Single Point Connection to clip in ILEM

# 110 Series Options and Accessories

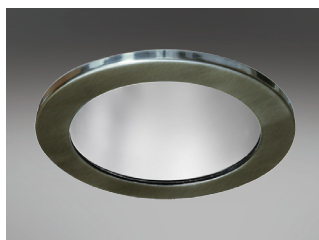
## Bezel Finish



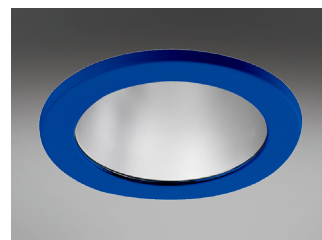
**TA300/WH**  
White bezel - RAL9010



**TA300/CH**  
Chrome bezel



**TA300/BA**  
Brushed aluminium bezel



**Product variations**  
Other colours and specifications  
available on request



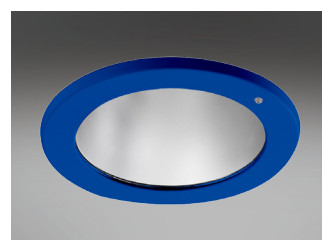
**AT300/WH**  
White anti-tamper bezel



**AT300/CH**  
Chrome anti-tamper bezel



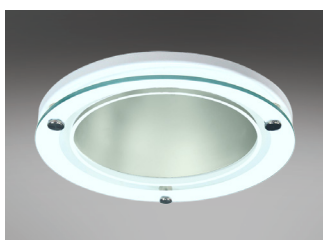
**AT300/BA**  
Brushed aluminium anti-tamper bezel



**Product variations**  
Other colours and specifications  
available on request

## Decorative Bezel

White /WH Chrome /CH Brushed Aluminium /BA



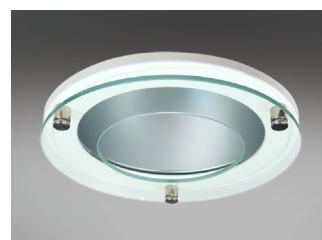
**TA301**  
White bezel complete with outer  
etched glass



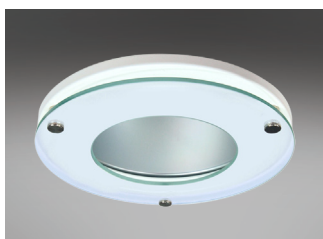
**TA302**  
White bezel complete with clear glass



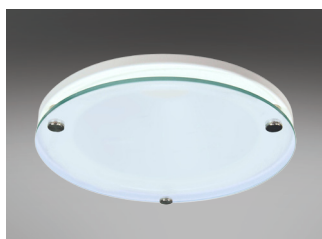
**TA303**  
White bezel complete with centre  
etched glass



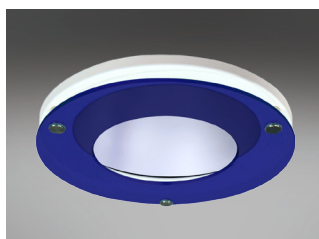
**TA305**  
White bezel complete with clear halo  
glass



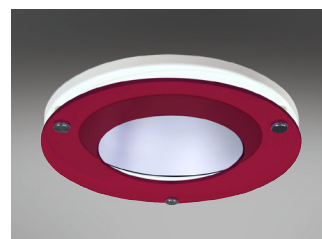
**TA306**  
White bezel complete with etched  
halo glass



**TA307**  
White bezel complete with fully  
etched glass



**TA312**  
White bezel complete with blue  
acrylic halo

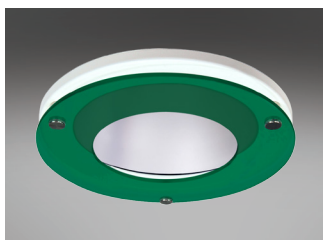


**TA313**  
White bezel complete with red acrylic  
halo

# 110 Series Options and Accessories

## Decorative Bezel

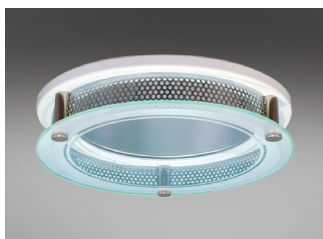
Continued



**TA314**  
White bezel complete with green acrylic halo

## Corona Bezel

White /WH Chrome /CH Brushed Aluminium /BA



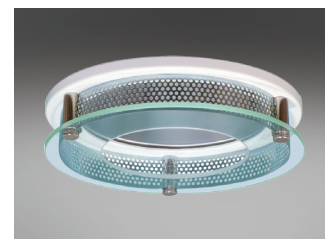
**CB301**  
White corona bezel with outer etched glass



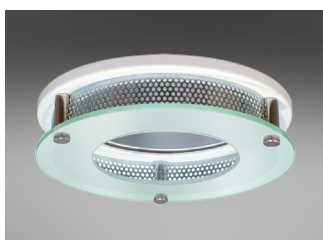
**CB302**  
White corona bezel with clear glass



**CB303**  
White corona bezel with centre etched glass



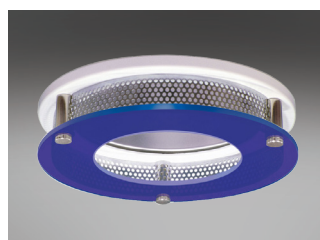
**CB305**  
White corona bezel with clear halo glass



**CB306**  
White corona bezel with etched halo glass



**CB307**  
White corona bezel with fully etched glass



**CB312**  
White corona bezel with blue acrylic halo



**CB313**  
White corona bezel with red acrylic halo



**CB314**  
White corona bezel with green acrylic halo

# 110 Series Options and Accessories

## IP65 Bezel



**/65**  
IP65 Bezel option



**IP65/002/195**  
IP65 Clear glass



**IP65/008/195**  
IP65 Opal polycarbonate



**IP65/009/195**  
IP65 Clear polycarbonate

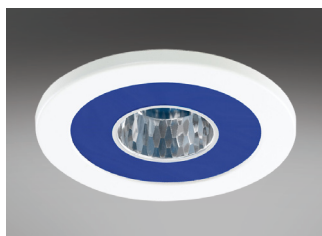


**GF008 / GF010**  
Anti-tamper driver / Anti-tamper bit  
for IP65 bezel

## Accessories



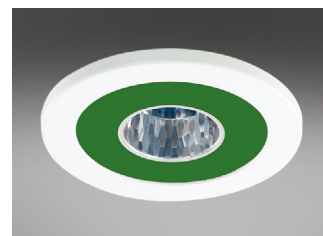
**TA351**  
Etched glass mini reflector



**TA352/BLUE**  
Blue lens mini reflector



**TA352/RED**  
Red lens mini reflector



**TA352/GREEN**  
Green lens mini reflector



**TA310/BLUE**  
Blue vertical halo



**TA310/FROST**  
Frosted vertical halo



**TA340**  
IP54 Clear glass



**TA341**  
IP54 Centre etched glass

# 110 Series Options and Accessories

## Accessories

Continued



**TA342**  
IP54 Full etched glass



**TA343**  
IP54 Clear polycarbonate



**TA344**  
IP54 Opal polycarbonate



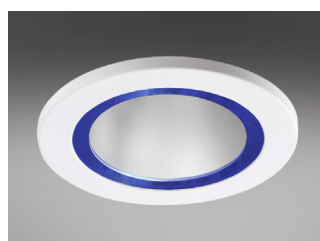
**TA316**  
IP54 Glass scatter dome



**TA317**  
IP44 Prismatic lens



**TA384**  
Frosted hi-light



**TA385**  
Blue hi-light



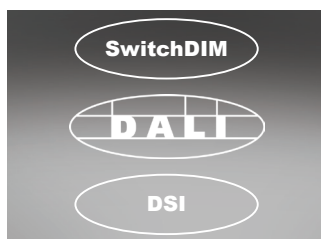
**GF208 / GF218**  
Anti-tamper driver / Anti-tamper bit



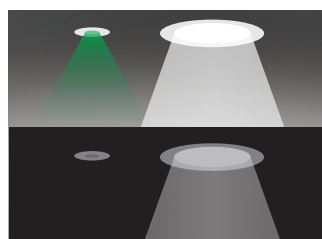
**HALOKIT.002**  
Halo kit - maximum cut-out 250 mm

# 110 Series Options and Accessories

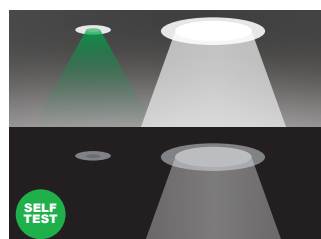
## Options



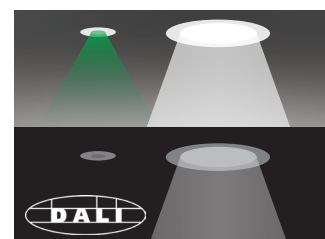
**/ECO**  
SwitchDIM, DALI or DSI



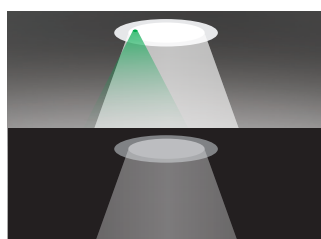
**/EM**  
EM conversion



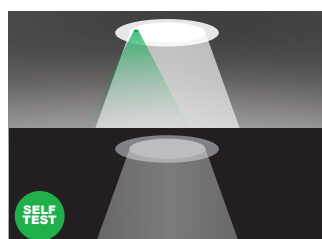
**/EMS**  
Self-test EM conversion



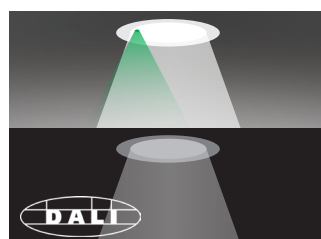
**/EMD**  
DALI EM conversion



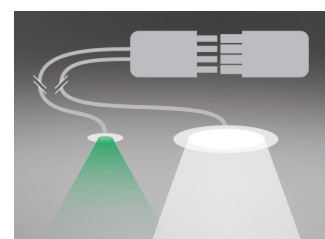
**/EMI**  
Integral indicator for EM conversion



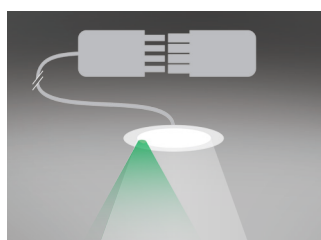
**/EMSI**  
Integral indicator for self-test EM conversion



**/EMDI**  
Integral indicator for DALI EM conversion



**/SPC**  
Single Point Connection to an ILEM product



**/SPCI**  
Single Point Connection to clip in ILEM



# 110 Series Options and Accessories

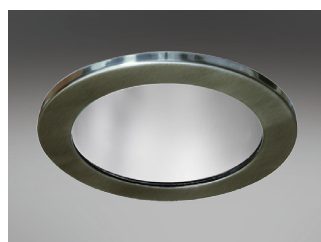
## Bezel Finish



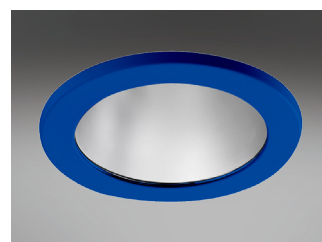
**TA300/WH**  
White bezel - RAL9010



**TA300/CH**  
Chrome bezel



**TA300/BA**  
Brushed aluminium bezel



**Product variations**  
Other colours and specifications  
available on request



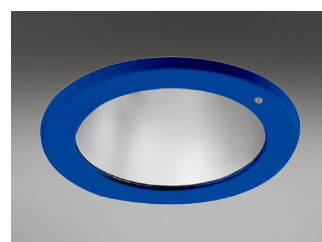
**AT300/WH**  
White anti-tamper bezel



**AT300/CH**  
Chrome anti-tamper bezel



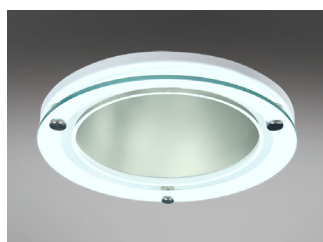
**AT300/BA**  
Brushed aluminium anti-tamper bezel



**Product variations**  
Other colours and specifications  
available on request

## Decorative Bezel

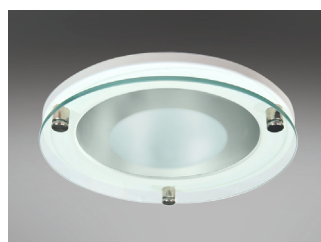
White /WH Chrome /CH Brushed Aluminium /BA



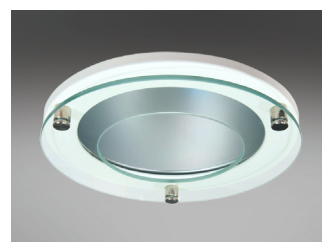
**TA301**  
White bezel complete with outer  
etched glass



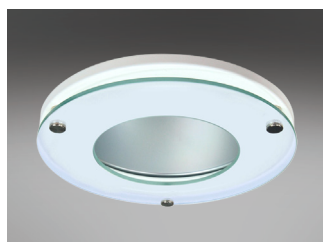
**TA302**  
White bezel complete with clear glass



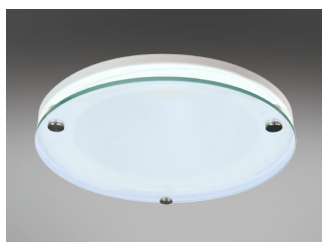
**TA303**  
White bezel complete with centre  
etched glass



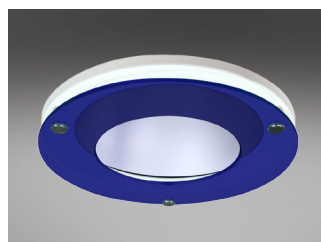
**TA305**  
White bezel complete with clear halo  
glass



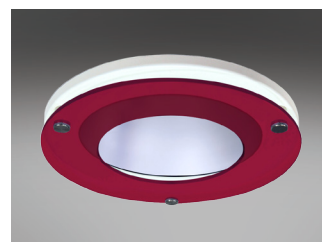
**TA306**  
White bezel complete with etched  
halo glass



**TA307**  
White bezel complete with fully  
etched glass



**TA312**  
White bezel complete with blue  
acrylic halo



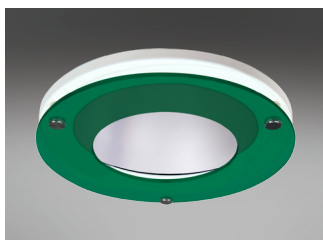
**TA313**  
White bezel complete with red acrylic  
halo



# 110 Series Options and Accessories

## Decorative Bezel

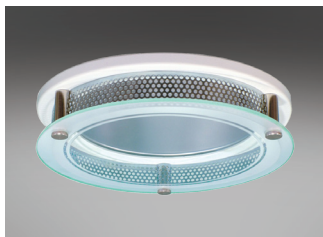
Continued



**TA314**  
White bezel complete with green acrylic halo

## Corona Bezel

White /**WH** Chrome /**CH** Brushed Aluminium /**BA**



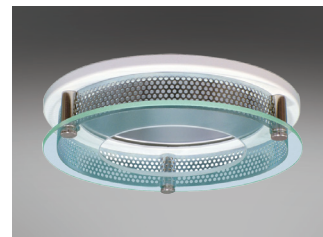
**CB301**  
White corona bezel with outer etched glass



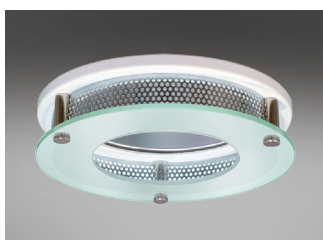
**CB302**  
White corona bezel with clear glass



**CB303**  
White corona bezel with centre etched glass



**CB305**  
White corona bezel with clear halo glass



**CB306**  
White corona bezel with etched halo glass



**CB307**  
White corona bezel with fully etched glass



**CB312**  
White corona bezel with blue acrylic halo



**CB313**  
White corona bezel with red acrylic halo



**CB314**  
White corona bezel with green acrylic halo

# 110 Series Options and Accessories

## IP65 Bezel



**/65**  
IP65 Bezel option



**IP65/002/195**  
IP65 Clear glass



**IP65/008/195**  
IP65 Opal polycarbonate



**IP65/009/195**  
IP65 Clear polycarbonate

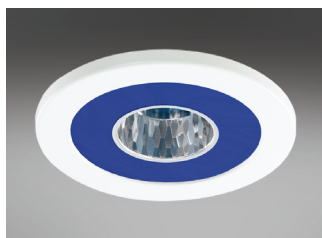


**GF008 / GF010**  
Anti-tamper driver / Anti-tamper bit  
for IP65 bezel

## Accessories



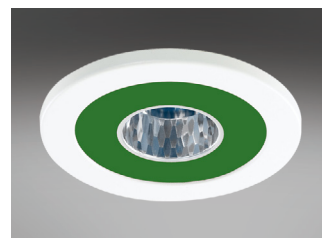
**TA351**  
Etched glass mini reflector



**TA352/BLUE**  
Blue lens mini reflector



**TA352/RED**  
Red lens mini reflector



**TA352/GREEN**  
Green lens mini reflector



**TA310/BLUE**  
Blue vertical halo



**TA310/FROST**  
Frosted vertical halo



**TA340**  
IP54 Clear glass



**TA341**  
IP54 Centre etched glass

# 110 Series Options and Accessories

## Accessories

Continued



**TA342**  
IP54 Full etched glass



**TA343**  
IP54 Clear polycarbonate



**TA344**  
IP54 Opal polycarbonate



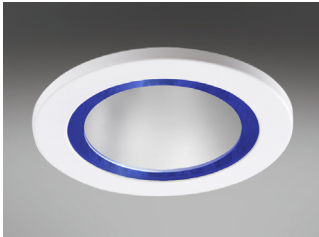
**TA316**  
IP54 Glass scatter dome



**TA317**  
IP44 Prismatic lens



**TA384**  
Frosted hi-light



**TA385**  
Blue hi-light



**GF208 / GF218**  
Anti-tamper driver / Anti-tamper bit



**HALOKIT.002**  
Halo kit - maximum cut-out 250 mm

# 110 Series Technical

## Technical Information

|                               |             |                               |                   |
|-------------------------------|-------------|-------------------------------|-------------------|
| Nominal weight                | 1.8 kg      | Operating ambient temperature | -25°C to +35°C    |
| Mains voltage                 | 220 - 240 V | Mains lead                    | 500 mm LSF        |
| Mains frequency               | 50 - 60 Hz  | Dimming lead                  | 500 mm 2 core LSF |
| Ingress protection from front | IP20        | Warranty                      | 5 years           |
| Ingress protection from rear  | IP20        | Power factor                  | >0.9              |
| Optical efficiency (DLOR)     | 87%         | Colour rendering              | R <sub>a</sub> 80 |
| MacAdam                       | 3 SDCM      |                               |                   |

| Model Ref. | Module Power (W) | Module Output (lm) | Module Efficacy (lm/W) | Luminaire Power (W) | Luminaire Output (Llm) | Luminaire Efficacy (Llm/W) | Colour Temp (K) | UGR  |
|------------|------------------|--------------------|------------------------|---------------------|------------------------|----------------------------|-----------------|------|
| 110.2001   | 9.1              | 1119               | 98.1                   | 11.4                | 973                    | 85.4                       | 3000            | 15.5 |
| 110.2002   | 18.2             | 1996               | 96.0                   | 20.8                | 1737                   | 83.5                       | 3000            | 17.5 |
| 110.2003   | 9.1              | 1220               | 107.0                  | 11.4                | 1061                   | 93.1                       | 4000            | 15.8 |
| 110.2004   | 18.2             | 2050               | 98.6                   | 20.8                | 1784                   | 85.8                       | 4000            | 17.8 |
| 110.3001   | 16.0             | 1917               | 109.5                  | 17.5                | 1667                   | 95.3                       | 3000            | 17.4 |
| 110.3002   | 27.0             | 2960               | 98.7                   | 30.0                | 2575                   | 85.8                       | 3000            | 18.9 |
| 110.3003   | 16.0             | 2090               | 119.4                  | 17.5                | 1818                   | 103.9                      | 4000            | 17.7 |
| 110.3004   | 24.9             | 3012               | 109.9                  | 27.4                | 2620                   | 95.6                       | 4000            | 18.9 |

Please note: Specification values may change due to rapid development of lighting technology. All performance data is taken at an ambient temperature of +25°C. Data may be rounded up/down for illustrative purposes. Tolerance range of optical and electrical data is +/-10%. We reserve the right to amend or change details without prior notification. E&OE. **MDS-139T-REV4 19/04/2017**

# 110 Series Life

25°C Ta (Ambient Temperature)

| Model Ref. | L90 / F10 | L80 / F10 | L70 / F10 |
|------------|-----------|-----------|-----------|
| 110.2001   | >50,000 h | >50,000 h | >50,000 h |
| 110.2003   | >50,000 h | >50,000 h | >50,000 h |
| 110.3001   | >50,000 h | >50,000 h | >50,000 h |
| 110.3003   | >50,000 h | >50,000 h | >50,000 h |
| 110.2002   | 42,600 h  | >50,000 h | >50,000 h |
| 110.2004   | 42,600 h  | >50,000 h | >50,000 h |
| 110.3002   | 41,400 h  | 42,000 h  | >50,000 h |
| 110.3004   | 41,400 h  | 42,000 h  | >50,000 h |

“L VALUE” = % of initial lumens maintained after specified time  
“F VALUE” = % of fittings failing to meet operational expectations after specified time

**EXAMPLE**  
60,000 hrs L80 / F10 = 80% of initial lumens maintained after 60,000 hours  
= 10% of fittings will have less than 80% of initial lumens after 60,000 hours  
OR  
= 90% of fittings will have maintained 80% of initial lumens after 60,000 hours