

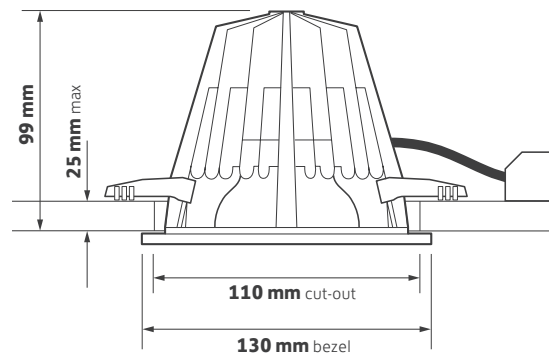
Key Features

- ▶ Tunable white luminaire ranging from 2700 - 6500 K
- ▶ Height under 100 mm using optimised passive thermodynamics
- ▶ Die-cast twist and lock bezel with frosted hi-light
- ▶ Spun aluminium satin etched reflector as standard
- ▶ White softlight reflector option
- ▶ DALI control as standard
- ▶ Plaster-in option available
- ▶ Short circuit, overload and temperature protection
- ▶ Complements the 110 and 148 Series

Ordering Information

Module Output	Power	Colour	Model Ref.
1400 lm	23 W	2700 - 6500 K	147.001

Technical Drawing



Options

Please select from the options below.

TA200 bezel options	/WH /CH /BA
Lighting Control Panel / XE Touch	LCP/XET
Single Point Connection to an ILEM product	/SPC
Please see accessories sheet	Accessories

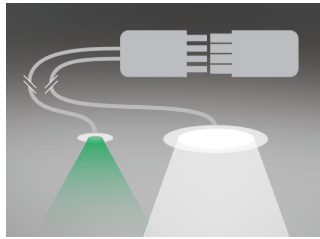


147 Series Options and Accessories

Options



LCP/XET
Lighting Control Panel / XE Touch

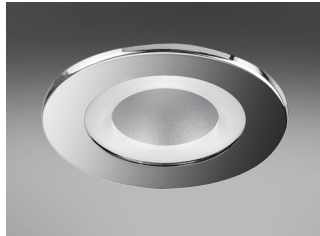


/SPC
Single Point Connection to an ILEM product

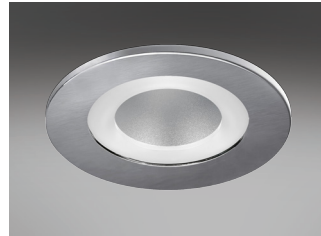
Bezel Finish



TA200/WH
White bezel

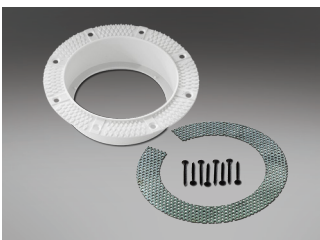


TA200/CH
Chrome bezel



TA200/BA
Brushed aluminium bezel

Fixing Options



PI200
Plaster-in kit. Please see PI200 datasheet for details.



PI200
Installed kit and fitting. Please see PI200 datasheet for details.



HALOKIT.001
Halo kit - maximum cut-out 150 mm

147 Series Options and Accessories

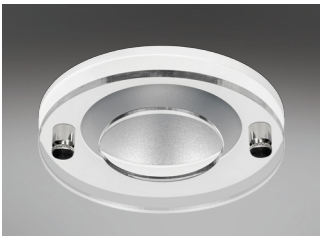
Softlight Reflector



/WSL
White softlight reflector

Decorative Bezel

White **/WH** Chrome **/CH** Brushed Aluminium **/BA**



TA225/WH
White bezel complete with clear halo



TA226/WH
White bezel complete with opal halo

Accessories



TA210/FROST
Frosted vertical halo



TA206
IP54 Glass scatter dome



TA240
IP54 Clear glass



TA241
IP54 Centre etched glass



TA242
IP54 Fully etched glass



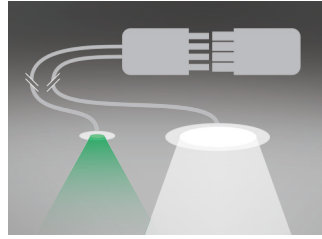
TA208
Kick reflector

147 Series Options and Accessories

Options



LCP/XET
Lighting Control Panel / XE Touch

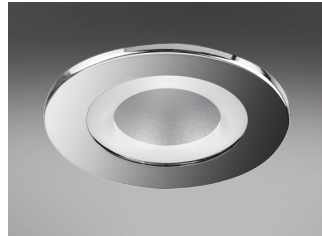


/SPC
Single Point Connection to an ILEM product

Bezel Finish



TA200/WH
White bezel

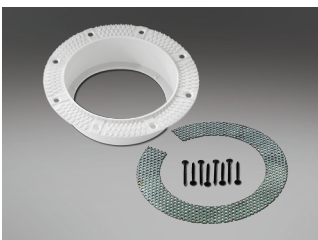


TA200/CH
Chrome bezel



TA200/BA
Brushed aluminium bezel

Fixing Options



PI200
Plaster-in kit. Please see PI200 datasheet for details.



PI200
Installed kit and fitting. Please see PI200 datasheet for details.



HALOKIT.001
Halo kit - maximum cut-out 150 mm

147 Series Options and Accessories

Softlight Reflector



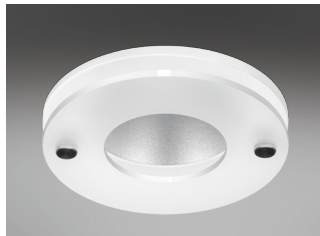
/WSL
White softlight reflector

Decorative Bezel

White **/WH** Chrome **/CH** Brushed Aluminium **/BA**



TA225/WH
White bezel complete with clear halo



TA226/WH
White bezel complete with opal halo

Accessories



TA210/FROST
Frosted vertical halo



TA206
IP54 Glass scatter dome



TA240
IP54 Clear glass



TA241
IP54 Centre etched glass



TA242
IP54 Fully etched glass



TA208
Kick reflector

147 Series Technical

Technical Information

Nominal weight	1 kg	Operating ambient temperature	-25°C to +35°C
Mains voltage	220 - 270 V	Mains lead	3 core LSF
Mains frequency	50 - 60 Hz	Dimming lead	2 core LSF
Ingress protection from front	IP20	Warranty	5 years
Ingress protection from rear	IP20	Power factor	>0.9
Optical efficiency (DLOR)	71%	Colour rendering	>R_a 90
MacAdam	3 SDCM	Control protocol	DALI type 8

Model Ref.	Luminaire Power (W)	Module Output (lm)	Module Efficacy (lm/W)	Luminaire Output (Llm)	Luminaire Efficacy (Llm/W)	Colour Temp (K)	UGR
147.001	22.8	1350	59.2	962	42.2	2700 - 6500	17

Performance data taken at 4000 K

147 Series Life

25°C Ta (Ambient Temperature)

Model Ref. L70

147.001	50,000 h
----------------	----------

“**L VALUE**” = % of initial lumens maintained after specified time

EXAMPLE

50,000 hrs L70 = 70% of initial lumens maintained after 50,000 hours