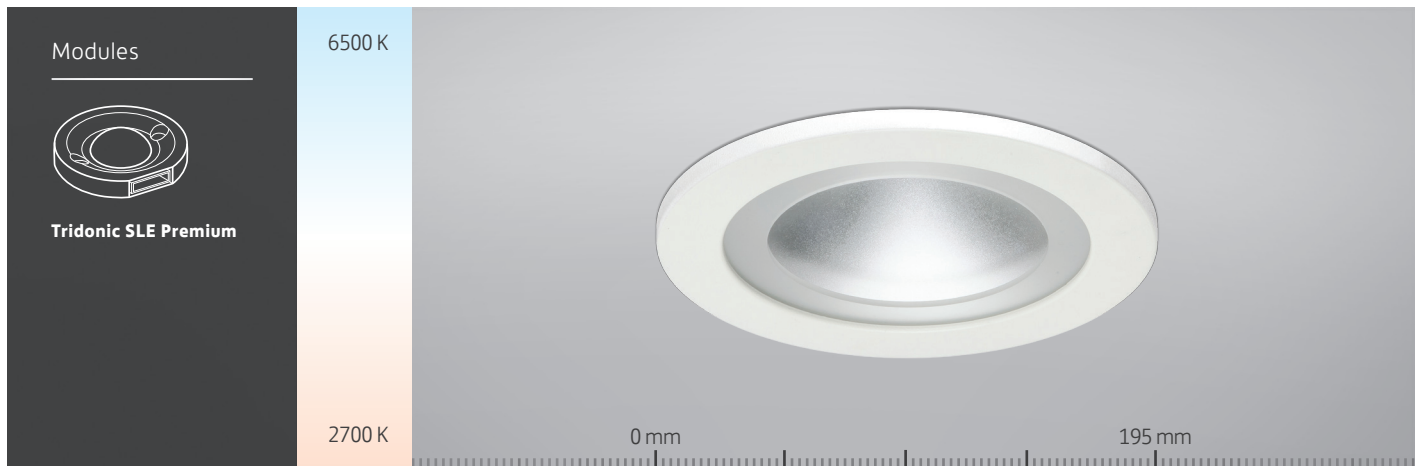


148 Series Datasheet



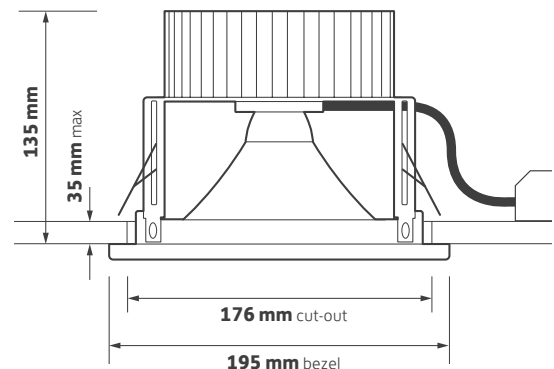
Key Features

- ▶ Tunable white luminaire ranging from 2700 - 6500 K
- ▶ Thermally optimised heatsink
- ▶ Die-cast twist and lock bezel with frosted hi-light
- ▶ Spun aluminium satin etched reflector
- ▶ Tridonic SLE Premium module and driver
- ▶ DALI control as standard
- ▶ Short circuit, overload and temperature protection
- ▶ Complements the 110 and 147 Series

Ordering Information

Module Output	Power	Colour	Model Ref.
2000 lm	31 W	2700 - 6500 K	148.001

Technical Drawing



Options

Please select from the options below.

TA300 bezel options	/WH /CH /BA
Lighting Control Panel / XE Touch	LCP/XET
Single Point Connection to an ILEM product	/SPC
Please see accessories sheet	Accessories

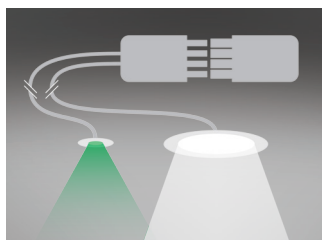


148 Series Options and Accessories

Options



LCP/XET
Lighting Control Panel / XE Touch



/SPC
Single Point Connection to an ILEM product

Bezel Finish



TA300/WH
White bezel



TA300/CH
Chrome bezel



TA300/BA
Brushed aluminium bezel

Decorative Bezel

White **/WH** Chrome **/CH** Brushed Aluminium **/BA**



TA301
White bezel complete with outer etched glass



TA302
White bezel complete with clear glass



TA303
White bezel complete with centre etched glass

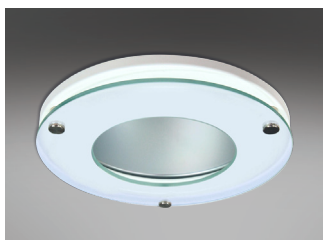


TA305
White bezel complete with clear halo glass

148 Series Options and Accessories

Decorative Bezel

Continued



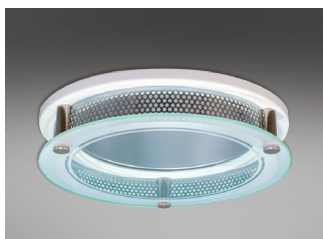
TA306
White bezel complete with etched
halo glass



TA307
White bezel complete with fully
etched glass

Corona Bezel

White /**WH** Chrome /**CH** Brushed Aluminium /**BA**



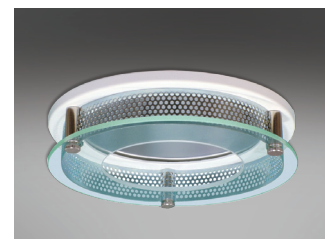
CB301
White corona bezel with outer
etched glass



CB302
White corona bezel with clear glass



CB303
White corona bezel with centre
etched glass



CB305
White corona bezel with clear
halo glass



CB306
White corona bezel with etched
halo glass



CB307
White corona bezel with fully
etched glass

148 Series Options and Accessories

Accessories



TA351
Etched glass mini reflector



TA310/FROST
Frosted vertical halo



TA340
IP54 Clear glass



TA341
IP54 Centre etched glass



TA342
IP54 Full etched glass



TA343
IP54 Clear polycarbonate



TA344
IP54 Opal polycarbonate



TA316
IP54 Glass scatter dome



TA317
IP44 Prismatic lens



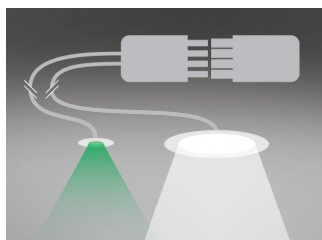
HALOKIT.002
Halo kit - maximum cut-out 250 mm

148 Series Options and Accessories

Options



LCP/XET
Lighting Control Panel / XE Touch



/SPC
Single Point Connection to an ILEM product

Bezel Finish



TA300/WH
White bezel



TA300/CH
Chrome bezel



TA300/BA
Brushed aluminium bezel

Decorative Bezel

White **/WH** Chrome **/CH** Brushed Aluminium **/BA**



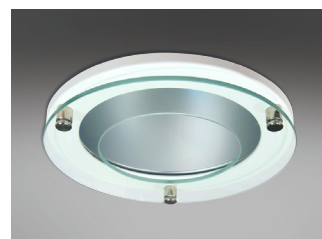
TA301
White bezel complete with outer etched glass



TA302
White bezel complete with clear glass



TA303
White bezel complete with centre etched glass

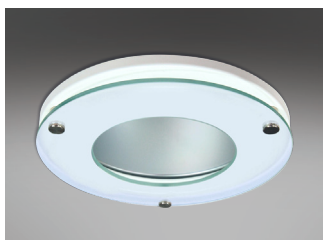


TA305
White bezel complete with clear halo glass

148 Series Options and Accessories

Decorative Bezel

Continued



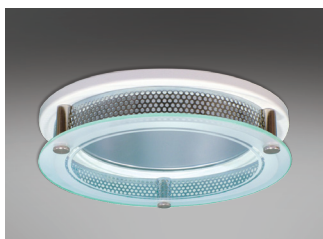
TA306
White bezel complete with etched halo glass



TA307
White bezel complete with fully etched glass

Corona Bezel

White /**WH** Chrome /**CH** Brushed Aluminium /**BA**



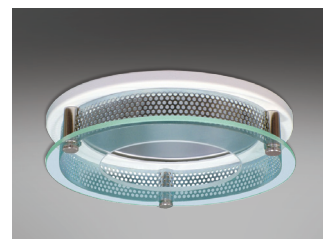
CB301
White corona bezel with outer etched glass



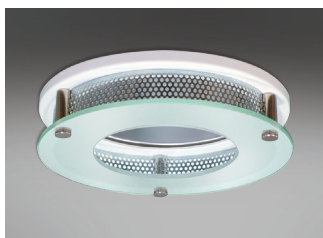
CB302
White corona bezel with clear glass



CB303
White corona bezel with centre etched glass



CB305
White corona bezel with clear halo glass



CB306
White corona bezel with etched halo glass



CB307
White corona bezel with fully etched glass

148 Series Options and Accessories

Accessories



TA351
Etched glass mini reflector



TA310/FROST
Frosted vertical halo



TA340
IP54 Clear glass



TA341
IP54 Centre etched glass



TA342
IP54 Full etched glass



TA343
IP54 Clear polycarbonate



TA344
IP54 Opal polycarbonate



TA316
IP54 Glass scatter dome



TA317
IP44 Prismatic lens



HALOKIT.002
Halo kit - maximum cut-out 250 mm

148 Series Technical

Technical Information

Nominal weight	1.7 kg	Operating ambient temperature	-25°C to +35°C
Mains voltage	220 - 270 V	Mains lead	3 core LSF
Mains frequency	50 - 60 Hz	Dimming lead	2 core LSF
Ingress protection from front	IP20	Warranty	5 years
Ingress protection from rear	IP20	Power factor	>0.9
Optical efficiency (DLOR)	70%	Colour rendering	>R _a 90
MacAdam	3 SDCM	Control protocol	DALI type 8

Model Ref.	Luminaire Power (W)	Module Output (lm)	Module Efficacy (lm/W)	Luminaire Output (Llm)	Luminaire Efficacy (Llm/W)	Colour Temp (K)	UGR
148.001	31.2	2050	65.0	1444	46.3	2700 - 6500	19

Performance data taken at 4000 K

Please note: Specification values may change due to rapid development of lighting technology. All performance data is taken at an ambient temperature of +25°C. Data may be rounded up/down for illustrative purposes. Tolerance range of optical and electrical data is +/-10%. We reserve the right to amend or change details without prior notification. E&OE. **MDS-179T 27/01/2016**

148 Series Life

25°C Ta (Ambient Temperature)

Model Ref.	L70
148.001	56,000 h

“L VALUE” = % of initial lumens maintained after specified time

EXAMPLE

50,000 hrs L70 = 70% of initial lumens maintained after 50,000 hours