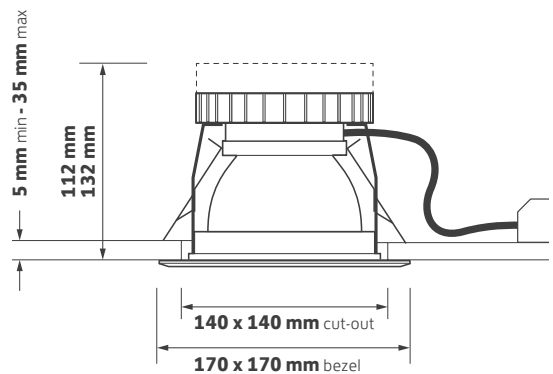


## Key Features

- ▶ Die-cast bezel with UB option for a range of accessories
- ▶ Highly specular reflector
- ▶ Dimming and emergency conversion options
- ▶ Life >60,000 hours (L70 / B10)

## Technical Drawing



## Ordering Information

Output	Power	Colour	Model Ref.
1075 lm	11 W	830	<b>60.1100.30</b>
1075 lm	11 W	840	<b>60.1100.40</b>
2075 lm	20 W	830	<b>60.2000.30</b>
2075 lm	20 W	840	<b>60.2000.40</b>
3075 lm	31 W	830	<b>60.3000.30</b>
3075 lm	30 W	840	<b>60.3000.40</b>
4800 lm	48 W	830	<b>60.5000.30</b>
4800 lm	48 W	840	<b>60.5000.40</b>

## Options

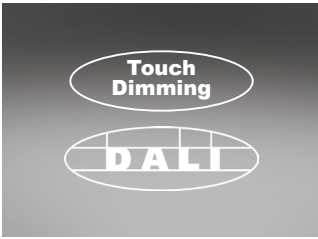
Please select from the options below.

Touch dimming / DALI	<b>/T+DALI</b>
Universal bezel	<b>/UB</b>
EM conversion	<b>/EM</b>
Self-test EM conversion	<b>/EMS</b>
DALI EM conversion	<b>/EMD</b>
Integral indicator for EM conversion	<b>I</b>
Single Point Connection to an ILEM product	<b>/SPC</b>
Please see accessories sheet	<b>Accessories</b>

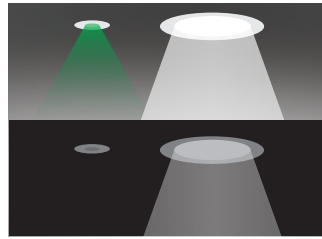


# 60 Series Options and Accessories

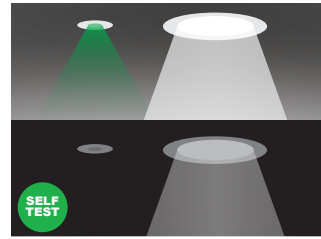
## Options



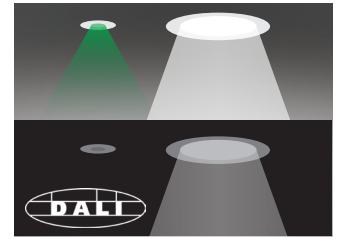
**/T+DALI**  
Touch dimming / DALI



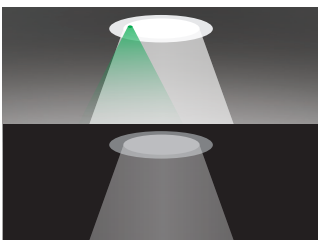
**/EM**  
EM conversion



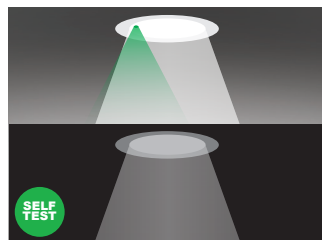
**/EMS**  
Self-test EM conversion



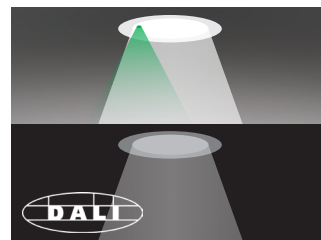
**/EMD**  
DALI EM conversion



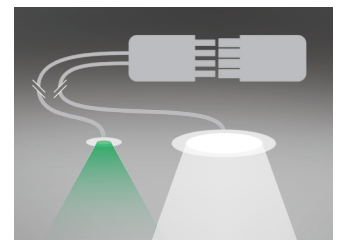
**EMI**  
Integral indicator for EM conversion



**EMSI**  
Integral indicator for self-test EM conversion



**EMDI**  
Integral indicator for DALI EM conversion



**/SPC**  
Single Point Connection to ILEM product



**/UB**  
Universal bezel to accept accessories

## Decorative Bezel

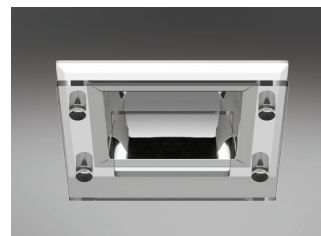
Please specify with Universal Bezel **/UB**



**DA001**  
Clear acrylic



**DA002**  
Opal acrylic



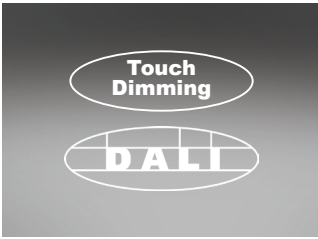
**DA003**  
Clear acrylic halo



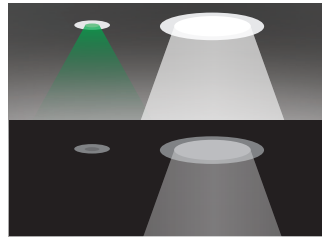
**DA004**  
Opal acrylic halo

# 60 Series Options and Accessories

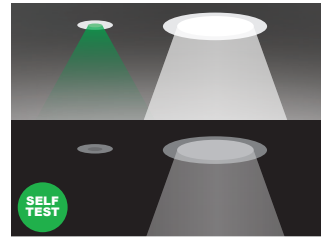
## Options



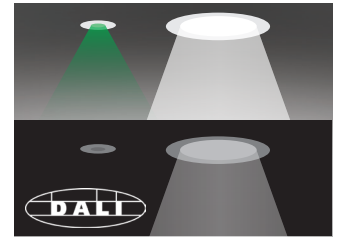
**/T+DALI**  
Touch dimming / DALI



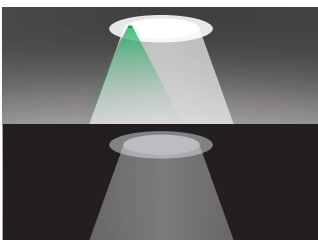
**/EM**  
EM conversion



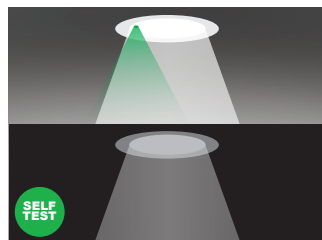
**/EMS**  
Self-test EM conversion



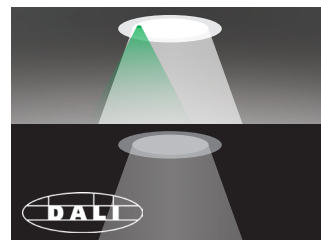
**/EMD**  
DALI EM conversion



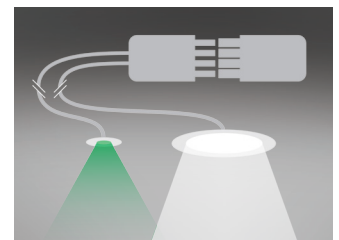
**EMI**  
Integral indicator for EM conversion



**EMSI**  
Integral indicator for self-test EM conversion



**EMDI**  
Integral indicator for DALI EM conversion



**/SPC**  
Single Point Connection to ILEM product



**/UB**  
Universal bezel to accept accessories

## Decorative Bezel

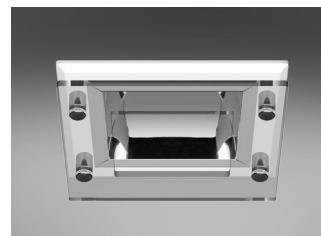
Please specify with Universal Bezel **/UB**



**DA001**  
Clear acrylic



**DA002**  
Opal acrylic



**DA003**  
Clear acrylic halo



**DA004**  
Opal acrylic halo

# 60 Series Technical

## Technical Information

Nominal weight	<b>1.6 kg</b>	Operating ambient temperature	<b>-25°C to +35°C</b>
Mains voltage	<b>220 - 240 V</b>	Mains lead	<b>500 mm LSF</b>
Mains frequency	<b>50 - 60 Hz</b>	Dimming lead	<b>500 mm 2 core LSF</b>
Ingress protection from front	<b>IP20</b>	Warranty	<b>5 years</b>
Ingress protection from rear	<b>IP20</b>	Power factor	<b>&gt;0.9</b>
Optical efficiency (DLOR)	<b>96%</b>	Colour rendering	<b>R<sub>a</sub> 80</b>
MacAdam	<b>3 SDCM</b>	White	<b>RAL 9010</b>

Model Ref.	Module Power (W)	Module Output (lm)	Module Efficacy (lm/W)	Luminaire Power (W)	Luminaire Output (lm)	Luminaire Efficacy (lm/W)	Colour Temp (K)	UGR
<b>60.1100.30</b>	8.7	1083	98.1	11.0	1040	94.2	3000	18.8
<b>60.1100.40</b>	8.7	1177	105.4	11.2	1130	101.1	4000	19.0
<b>60.2000.30</b>	17.4	2073	105.2	19.7	1990	101.0	3000	21.0
<b>60.2000.40</b>	17.4	2252	114.3	19.7	2162	109.7	4000	21.3
<b>60.3000.30</b>	26.0	3076	99.2	31.0	2953	95.3	3000	22.4
<b>60.3000.40</b>	25.9	3335	111.3	30.0	3202	106.8	4000	22.6
<b>60.5000.30</b>	42.5	4802	100.0	48.0	4610	96.0	3000	23.9
<b>60.5000.40</b>	42.5	5210	108.5	48.0	5001	104.2	4000	24.2

# 60 Series Life

---

## 25°C Ta (Ambient Temperature)

---

Model Ref.	L90 / B10	L80 / B10	L70 / B10
<b>60.1100.30</b>	20,000 h	43,000 h	>60,000 h
<b>60.1100.40</b>	20,000 h	43,000 h	>60,000 h
<b>60.2000.30</b>	20,000 h	43,000 h	>60,000 h
<b>60.2000.40</b>	20,000 h	43,000 h	>60,000 h
<b>60.3000.30</b>	18,000 h	39,000 h	>60,000 h
<b>60.3000.40</b>	18,000 h	39,000 h	>60,000 h
<b>60.5000.30</b>	18,000 h	39,000 h	>60,000 h
<b>60.5000.40</b>	18,000 h	39,000 h	>60,000 h

“**L VALUE**” = % of initial lumens maintained after specified time

“**B VALUE**” = % of fittings that will have depreciated below the L value after specified time

### EXAMPLE

- 50,000 hrs L70 / B50 = 70% of initial lumens maintained after 50,000 hours  
= 50% of fittings will have depreciated below 70% of the initial lumens after 50,000 hours  
OR  
= 50% of fittings will have maintained 70% of the initial lumens after 50,000 hours