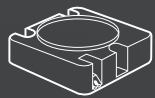


62 Series Datasheet

Modules



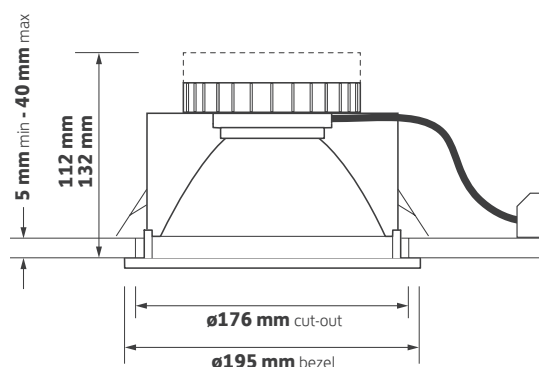
Fortimo DLM Flex

0 mm 195 mm

Key Features

- ▶ Die-cast twist and lock bezel with interchangeable accessories
- ▶ Satin etched reflector
- ▶ Optimised thermal management system
- ▶ Dimming and emergency conversion options
- ▶ Life >60,000 hours (L70 / B10)

Technical Drawing



Ordering Information

Output	Power	Colour	Model Ref.
975 lm	11 W	830	62.1100.30
975 lm	11 W	840	62.1100.40
1875 lm	21 W	830	62.2000.30
1875 lm	21 W	840	62.2000.40
2800 lm	30 W	830	62.3000.30
2800 lm	30 W	840	62.3000.40
4350 lm	48 W	830	62.5000.30
4350 lm	48 W	840	62.5000.40

Please select from the options below.

TA300 bezel options	/WH /CH /BA
IP65 bezel option	/65
Touch dimming / DALI	/T+DALI
EM conversion	/EM
Self-test EM conversion	/EMS
DALI EM conversion	/EMD
Integral indicator for EM conversion	I
Single Point Connection to an ILEM product	/SPC
Integral connection to clip in ILEM	/SPCI
Please see accessories sheet	Accessories

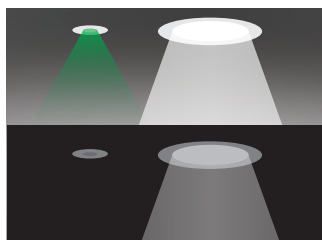


62 Series Options and Accessories

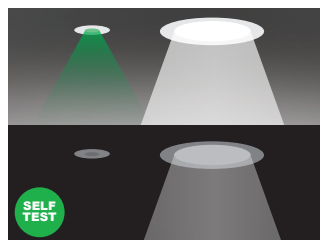
Options



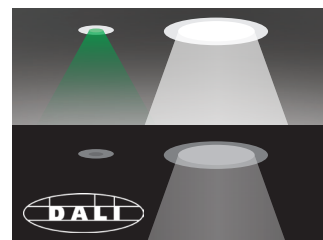
/T+DALI
Touch dimming / DALI



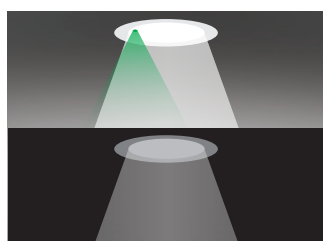
/EM
EM conversion



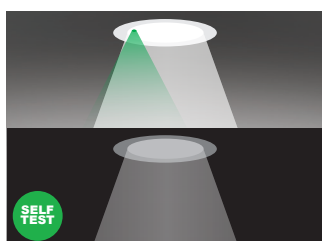
/EMS
Self-test EM conversion



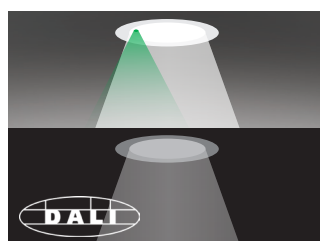
/EMD
DALI EM conversion



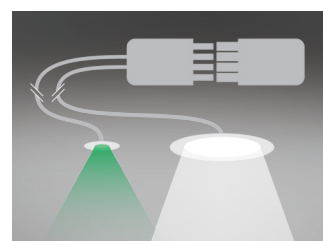
EMI
Integral indicator for EM conversion



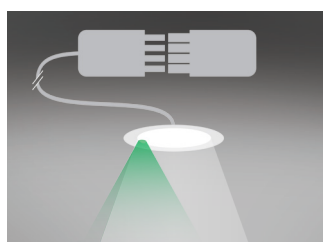
EMSI
Integral indicator for self-test EM conversion



EMDI
Integral indicator for DALI EM conversion



/SPC
Single Point Connection to an ILEM product



/SPCI
Single Point Connection to clip in ILEM

Bezel Finish



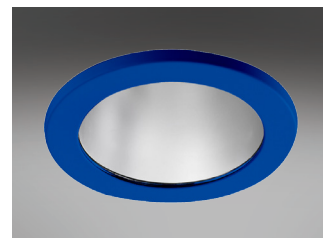
TA300/WH
White bezel - RAL9010



TA300/CH
Chrome bezel



TA300/BA
Brushed aluminium bezel



Product variations
Other colours and specifications available on request

62 Series Options and Accessories

Bezel Finish

Continued



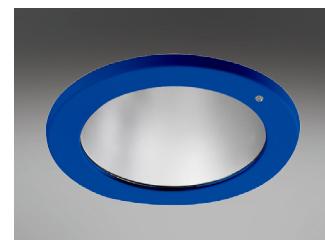
AT300/WH
White anti-tamper bezel



AT300/CH
Chrome anti-tamper bezel



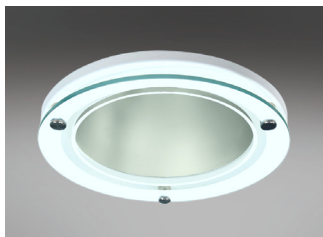
AT300/BA
Brushed aluminium anti-tamper bezel



Product variations
Other colours and specifications
available on request

Decorative Bezel

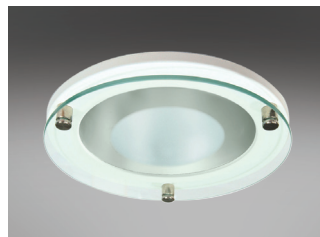
White /WH Chrome /CH Brushed Aluminium /BA



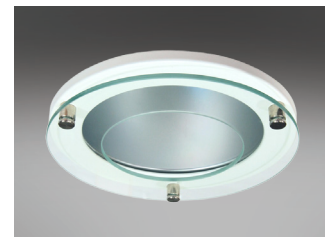
TA301
White bezel complete with outer
etched glass



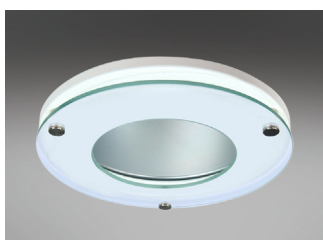
TA302
White bezel complete with clear glass



TA303
White bezel complete with centre
etched glass



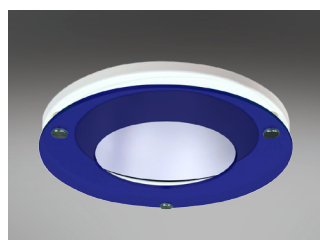
TA305
White bezel complete with clear
halo glass



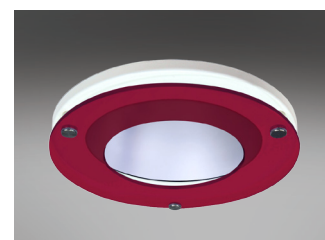
TA306
White bezel complete with etched
halo glass



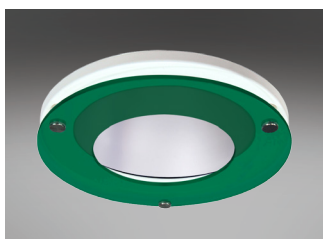
TA307
White bezel complete with fully
etched glass



TA312
White bezel complete with blue
acrylic halo



TA313
White bezel complete with red
acrylic halo

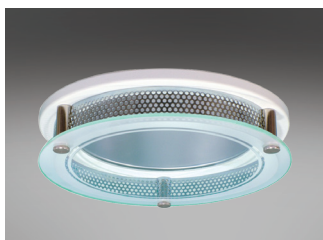


TA314
White bezel complete with green
acrylic halo

62 Series Options and Accessories

Corona Bezel

White /WH Chrome /CH Brushed Aluminium /BA



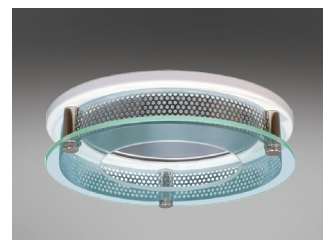
CB301
White corona bezel with outer etched glass



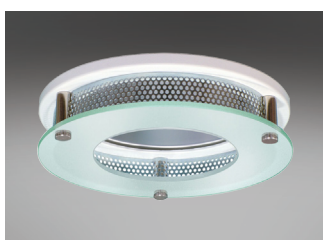
CB302
White corona bezel with clear glass



CB303
White corona bezel with centre etched glass



CB305
White corona bezel with clear halo glass



CB306
White corona bezel with etched halo glass



CB307
White corona bezel with fully etched glass



CB312
White corona bezel with blue acrylic halo



CB313
White corona bezel with red acrylic halo



CB314
White corona bezel with green acrylic halo

IP65 Bezel



/65
Universal bezel to accept IP65 accessories



IP65/002/195
IP65 Clear glass



IP65/008/195
IP65 Opal polycarbonate

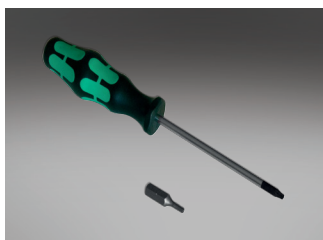


IP65/009/195
IP65 Clear polycarbonate

62 Series Options and Accessories

IP65 Bezel

Continued



GF008 / GF010

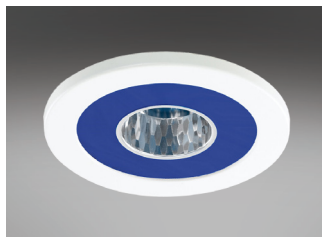
Anti-tamper driver / Anti-tamper bit
for IP65 bezel

Accessories



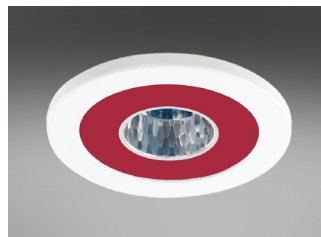
TA351

Etched glass mini reflector



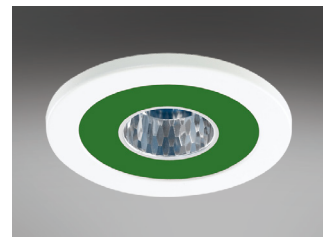
TA352/BLEU

Blue lens mini reflector



TA352/RED

Red lens mini reflector



TA352/GREEN

Green lens mini reflector



TA310/FROST

Frosted vertical halo



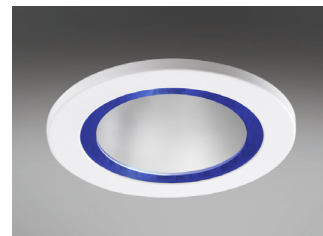
TA310/BLUE

Blue vertical halo



TA384

Frosted hi-light



TA385

Blue hi-light



TA340

IP54 Clear glass



TA341

IP54 Centre etched glass



TA342

IP54 Full etched glass



TA343

IP54 Clear polycarbonate

62 Series Options and Accessories

Accessories

Continued



TA344
IP54 Opal polycarbonate



TA316
IP54 Glass scatter dome



TA317
IP44 Prismatic lens



GF208 / GF218
Anti-tamper driver / Anti-tamper bit



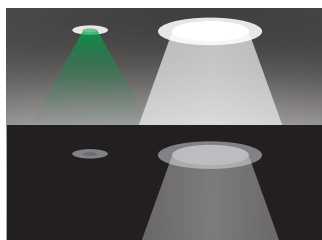
HALOKIT.002
Halo kit - maximum cut-out 250 mm

62 Series Options and Accessories

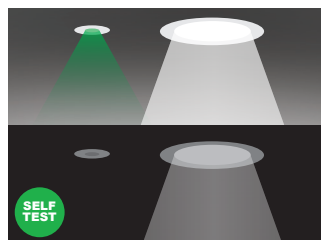
Options



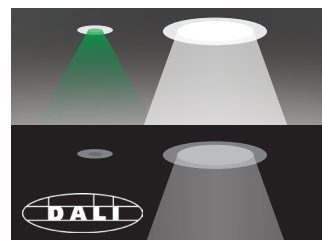
/T+DALI
Touch dimming / DALI



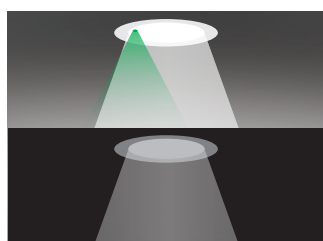
/EM
EM conversion



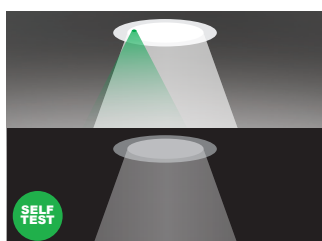
/EMS
Self-test EM conversion



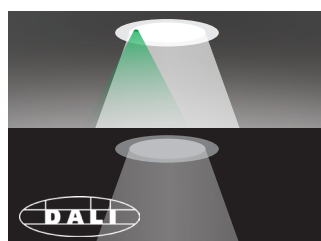
/EMD
DALI EM conversion



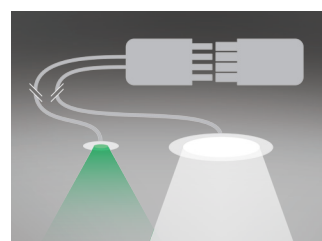
EMI
Integral indicator for EM conversion



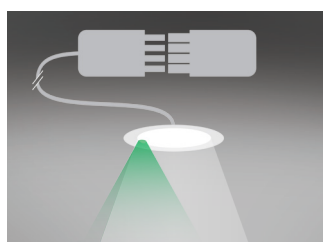
EMSI
Integral indicator for self-test EM conversion



EMDI
Integral indicator for DALI EM conversion



/SPC
Single Point Connection to an ILEM product



/SPCI
Single Point Connection to clip in ILEM

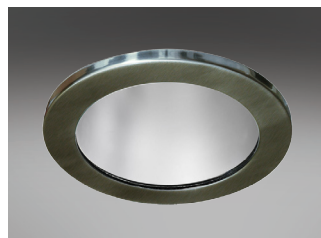
Bezel Finish



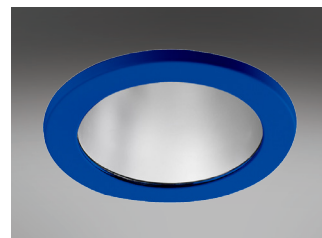
TA300/WH
White bezel - RAL9010



TA300/CH
Chrome bezel



TA300/BA
Brushed aluminium bezel



Product variations
Other colours and specifications available on request

62 Series Options and Accessories

Bezel Finish

Continued



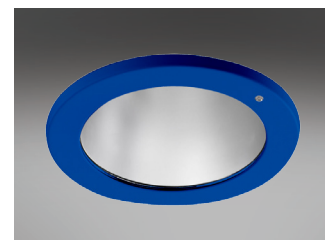
AT300/WH
White anti-tamper bezel



AT300/CH
Chrome anti-tamper bezel



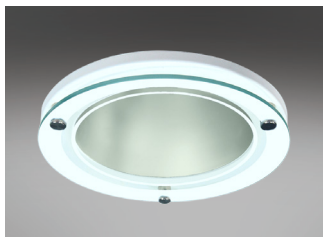
AT300/BA
Brushed aluminium anti-tamper bezel



Product variations
Other colours and specifications
available on request

Decorative Bezel

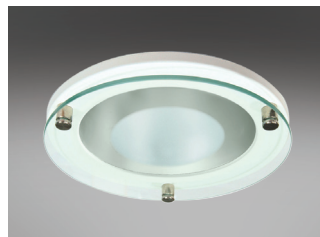
White /WH Chrome /CH Brushed Aluminium /BA



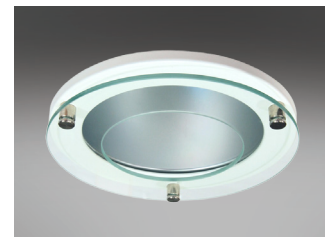
TA301
White bezel complete with outer
etched glass



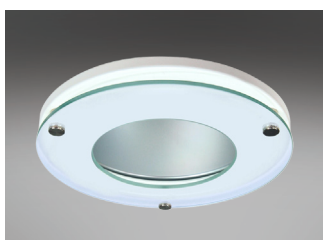
TA302
White bezel complete with clear glass



TA303
White bezel complete with centre
etched glass



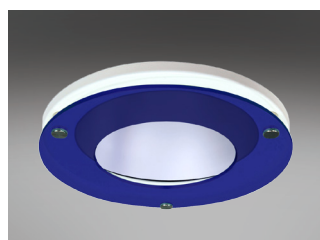
TA305
White bezel complete with clear
halo glass



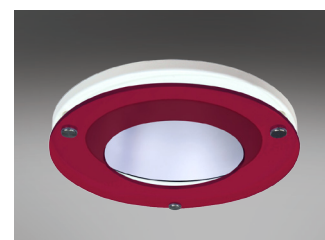
TA306
White bezel complete with etched
halo glass



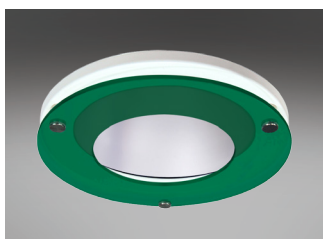
TA307
White bezel complete with fully
etched glass



TA312
White bezel complete with blue
acrylic halo



TA313
White bezel complete with red
acrylic halo

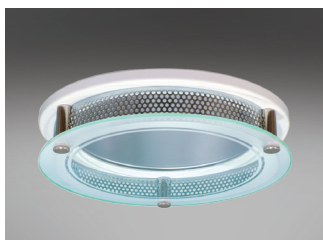


TA314
White bezel complete with green
acrylic halo

62 Series Options and Accessories

Corona Bezel

White /WH Chrome /CH Brushed Aluminium /BA



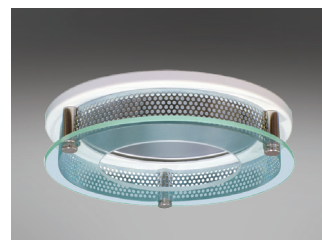
CB301
White corona bezel with outer etched glass



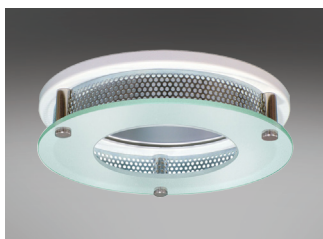
CB302
White corona bezel with clear glass



CB303
White corona bezel with centre etched glass



CB305
White corona bezel with clear halo glass



CB306
White corona bezel with etched halo glass



CB307
White corona bezel with fully etched glass



CB312
White corona bezel with blue acrylic halo



CB313
White corona bezel with red acrylic halo



CB314
White corona bezel with green acrylic halo

IP65 Bezel



/65
Universal bezel to accept IP65 accessories



IP65/002/195
IP65 Clear glass



IP65/008/195
IP65 Opal polycarbonate



IP65/009/195
IP65 Clear polycarbonate

62 Series Options and Accessories

IP65 Bezel

Continued



GF008 / GF010

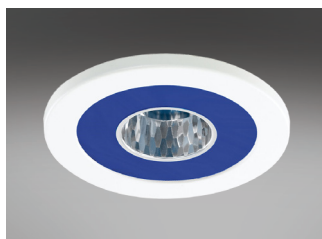
Anti-tamper driver / Anti-tamper bit
for IP65 bezel

Accessories



TA351

Etched glass mini reflector



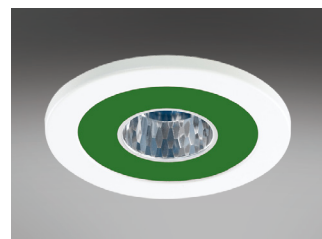
TA352/BLE

Blue lens mini reflector



TA352/RED

Red lens mini reflector



TA352/GREEN

Green lens mini reflector



TA310/FROST

Frosted vertical halo



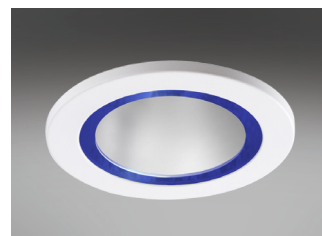
TA310/BLUE

Blue vertical halo



TA384

Frosted hi-light



TA385

Blue hi-light



TA340

IP54 Clear glass



TA341

IP54 Centre etched glass



TA342

IP54 Full etched glass



TA343

IP54 Clear polycarbonate

62 Series Options and Accessories

Accessories

Continued



TA344
IP54 Opal polycarbonate



TA316
IP54 Glass scatter dome



TA317
IP44 Prismatic lens



GF208 / GF218
Anti-tamper driver / Anti-tamper bit



HALOKIT.002
Halo kit - maximum cut-out 250 mm

62 Series Technical

Technical Information

Nominal weight	1.8 kg	Operating ambient temperature	-25°C to +35°C
Mains voltage	220 - 240 V	Mains lead	500 mm LSF
Mains frequency	50 - 60 Hz	Dimming lead	500 mm 2 core LSF
Ingress protection from front	IP20	Warranty	5 years
Ingress protection from rear	IP20	Power factor	>0.9
Optical efficiency (DLOR)	87%	Colour rendering	R _a 80
MacAdam	3 SDCM		

Model Ref.	Module Power (W)	Module Output (lm)	Module Efficacy (lm/W)	Luminaire Power (W)	Luminaire Output (lm)	Luminaire Efficacy (lm/W)	Colour Temp (K)	UGR
62.1100.30	8.7	1083	98.5	11.0	942	85.7	3000	15.5
62.1100.40	8.7	1177	107.0	11.0	1024	93.1	4000	15.7
62.2000.30	17.4	2073	105.2	19.7	1803	91.5	3000	17.7
62.2000.40	17.4	2252	114.3	19.7	1959	99.5	4000	18.0
62.3000.30	26.0	3076	99.2	31.0	2676	86.3	3000	19.1
62.3000.40	25.9	3335	111.2	30.0	2902	96.7	4000	19.4
62.5000.30	42.5	4802	100.0	48.0	4178	87.0	3000	20.8
62.5000.40	42.5	5210	108.5	48.0	4532	94.4	4000	20.9

Please note: Specification values may change due to rapid development of lighting technology. All performance data is taken at an ambient temperature of +25°C. Data may be rounded up/down for illustrative purposes. Tolerance range of optical and electrical data is +/-10%. We reserve the right to amend or change details without prior notification. E&OE. **MDS-087T-REV9 19/04/2017**

62 Series Life

25°C Ta (Ambient Temperature)

Model Ref.	L90 / B10	L80 / B10	L70 / B10
62.1100.30	20,000 h	43,000 h	>60,000 h
62.1100.40	20,000 h	43,000 h	>60,000 h
62.2000.30	20,000 h	43,000 h	>60,000 h
62.2000.40	20,000 h	43,000 h	>60,000 h
62.3000.30	18,000 h	39,000 h	>60,000 h
62.3000.40	18,000 h	39,000 h	>60,000 h
62.5000.30	18,000 h	39,000 h	>60,000 h
62.5000.40	18,000 h	39,000 h	>60,000 h

“L VALUE” = % of initial lumens maintained after specified time
“B VALUE” = % of fittings that will have depreciated below the L value after specified time

EXAMPLE
50,000 hrs L70 / B50 = 70% of initial lumens maintained after 50,000 hours
= 50% of fittings will have depreciated below 70% of the initial lumens after 50,000 hours
OR
= 50% of fittings will have maintained 70% of the initial lumens after 50,000 hours