

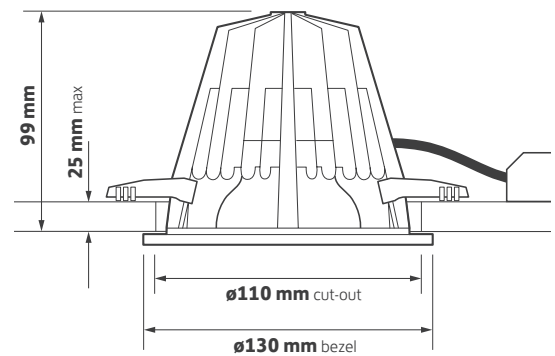
Key Features

- ▶ For superior light quality
- ▶ Height under 100 mm using optimised passive thermodynamics
- ▶ Die-cast twist and lock bezel with interchangeable accessories
- ▶ Multi-faceted medium beam reflector with an excellent optical efficiency of 85%
- ▶ IP65 bezel option
- ▶ Various dimming options
- ▶ Emergency conversion options
- ▶ 5 year warranty 50,000 hours
- ▶ Short circuit, overload and temperature protection
- ▶ Comes with 500 mm supply lead

Ordering Information

Output	Power	Colour	Model Ref.
975 lm	12 W	830	74.001
975 lm	12 W	840	74.002
1325 lm	17 W	830	74.003
1325 lm	17 W	840	74.004
1725 lm	24 W	830	74.005
1725 lm	24 W	840	74.006
2550 lm	34 W	830	74.007
2550 lm	34 W	840	74.008

Technical Drawing



Options

Please select from the options below.

TA200 bezel options	/WH /CH /BA /BL
High colour rendering	R_a >95
SwitchDIM, DALI, DSI	/ECO
EM conversion	/EM
Self-test EM conversion	/EMS
DALI EM conversion	/EMD
Integral indicator for EM conversion	I
Single Point Connection to an ILEM	/SPC
Please see accessories sheet	Accessories



74 Series Options and Accessories

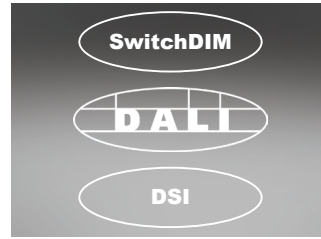
Options



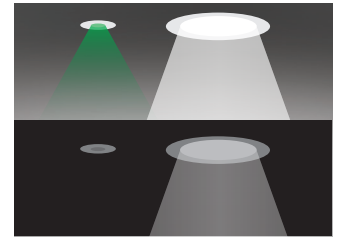
/NB
Narrow beam reflector



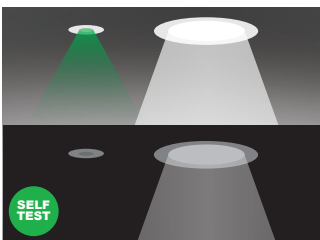
/WB
Wide beam reflector



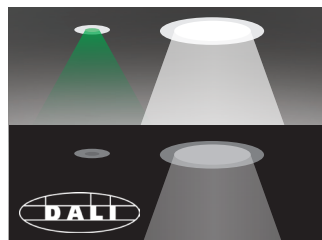
/ECO
SwitchDIM, DALI or DSI



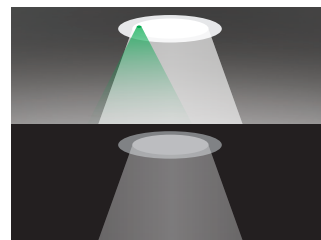
/EM
EM conversion



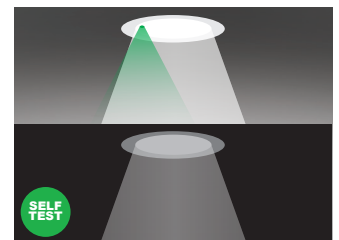
/EMS
Self-test EM conversion



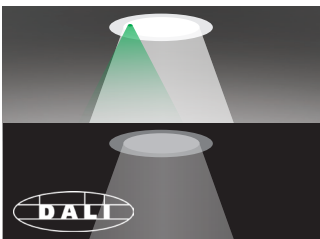
/EMD
DALI EM conversion



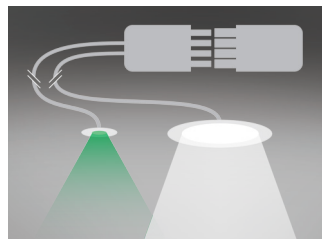
/EMI
Integral indicator for EM conversion



/EMSI
Integral indicator for self-test EM conversion



/EMDI
Integral indicator for DALI EM conversion



/SPC
Single Point Connection to ILEM product

74 Series Options and Accessories

Bezel Finish



TA200/WH
White bezel - RAL9010



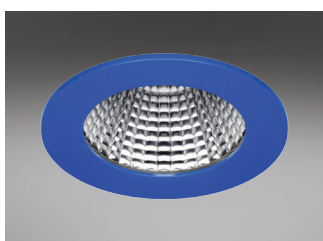
TA200/CH
Chrome bezel



TA200/BA
Brushed aluminium bezel



TA200/BL
Black bezel - RAL9005



Product variations

Other colours and specifications available on request



AT200/WH
White anti-tamper bezel



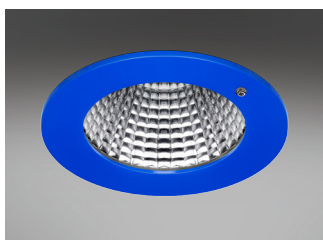
AT200/CH
Chrome anti-tamper bezel



AT200/BA
Brushed aluminium anti-tamper bezel



AT200/BL
Black anti-tamper bezel



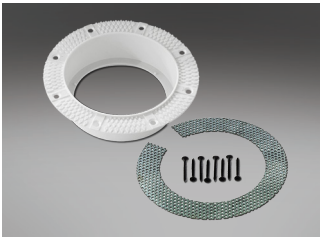
Product variations

Other colours and specifications available on request

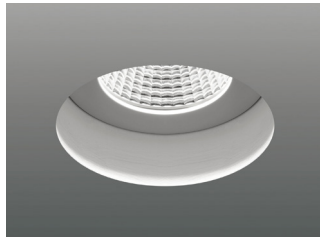
74 Series Options and Accessories

Fixing Options

Available with selected accessories



PI200
Plaster-in kit. Please see PI200 datasheet for details.



PI200
Installed kit and fitting. Please see PI200 datasheet for details.



HALOKIT.001
Halo kit - maximum cut-out 150 mm

IP65 Bezel



IP65/001/130
IP65 clear polycarbonate

Decorative Bezel

White /**WH** Chrome /**CH** Brushed Aluminium /**BA** Black /**BL**



TA225/WH
White bezel complete with clear halo



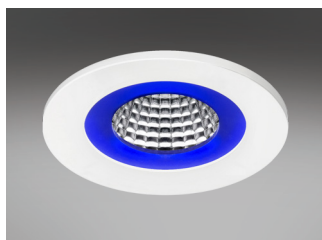
TA226/WH
White bezel complete with opal halo

74 Series Options and Accessories

Accessories



TA220/FROST
Frosted hi-light



TA220/BLUE
Blue hi-light



TA210/FROST
Frosted vertical halo



TA210/BLUE
Blue vertical halo



TA206
IP54 Glass scatter dome



TA240
IP54 Clear glass



TA241
IP54 Centre etched glass



TA242
IP54 Fully etched glass



TA208
Kick reflector



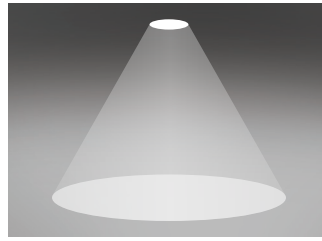
GF208 / GF218
Anti-tamper driver / Anti-tamper bit

74 Series Options and Accessories

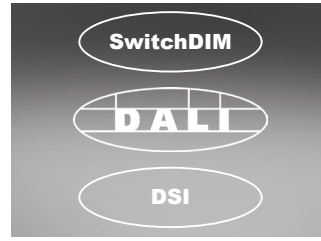
Options



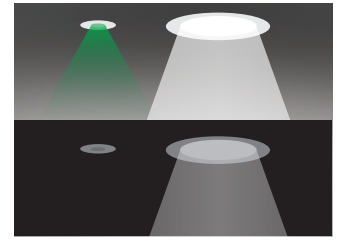
/NB
Narrow beam reflector



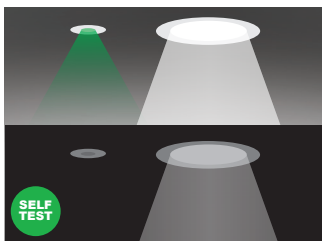
/WB
Wide beam reflector



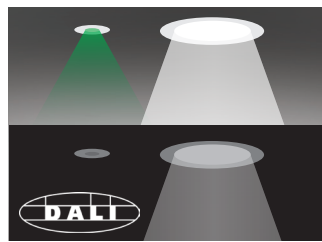
/ECO
SwitchDIM, DALI or DSI



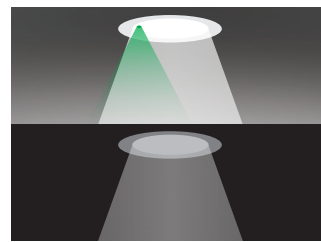
/EM
EM conversion



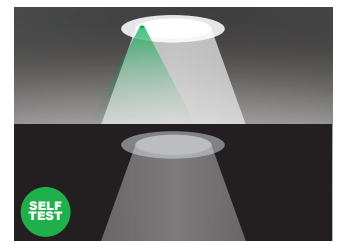
/EMS
Self-test EM conversion



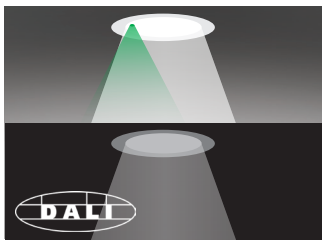
/EMD
DALI EM conversion



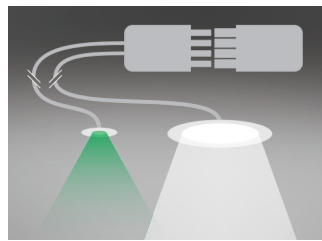
/EMI
Integral indicator for EM conversion



/EMSI
Integral indicator for self-test EM conversion



/EMDI
Integral indicator for DALI EM conversion



/SPC
Single Point Connection to ILEM product

74 Series Options and Accessories

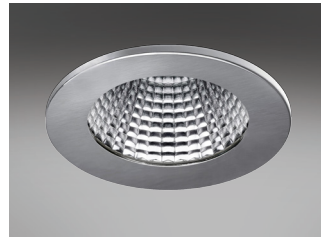
Bezel Finish



TA200/WH
White bezel - RAL9010



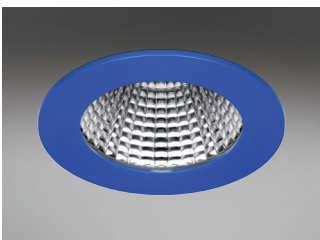
TA200/CH
Chrome bezel



TA200/BA
Brushed aluminium bezel



TA200/BL
Black bezel - RAL9005



Product variations
Other colours and specifications
available on request



AT200/WH
White anti-tamper bezel



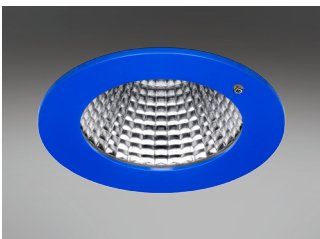
AT200/CH
Chrome anti-tamper bezel



AT200/BA
Brushed aluminium anti-tamper bezel



AT200/BL
Black anti-tamper bezel

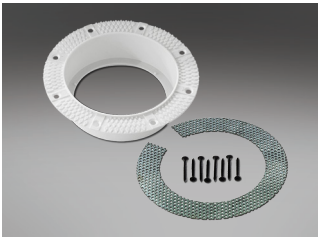


Product variations
Other colours and specifications
available on request

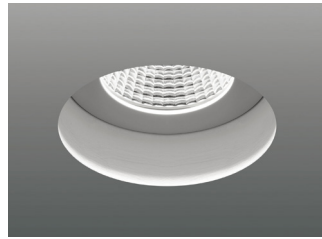
74 Series Options and Accessories

Fixing Options

Available with selected accessories



PI200
Plaster-in kit. Please see PI200 datasheet for details.



PI200
Installed kit and fitting. Please see PI200 datasheet for details.



HALOKIT.001
Halo kit - maximum cut-out 150 mm

IP65 Bezel



IP65/001/130
IP65 clear polycarbonate

Decorative Bezel

White /**WH** Chrome /**CH** Brushed Aluminium /**BA** Black /**BL**



TA225/WH
White bezel complete with clear halo



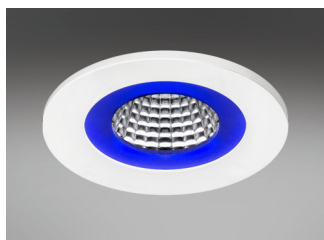
TA226/WH
White bezel complete with opal halo

74 Series Options and Accessories

Accessories



TA220/FROST
Frosted hi-light



TA220/BLUE
Blue hi-light



TA210/FROST
Frosted vertical halo



TA210/BLUE
Blue vertical halo



TA206
IP54 Glass scatter dome



TA240
IP54 Clear glass



TA241
IP54 Centre etched glass



TA242
IP54 Fully etched glass



TA208
Kick reflector



GF208 / GF218
Anti-tamper driver / Anti-tamper bit

74 Series Technical

Technical Information

Nominal weight	0.5 kg	Mains lead	500 mm LSF
Mains voltage	220 - 240 V	Dimming lead	500 mm 2 core LSF
Mains frequency	50 - 60 Hz	Warranty	5 years
Ingress protection from front	IP20	Power factor	>0.9
Ingress protection from rear	IP20	MacAdam	≤1x2 SDCM
Optical efficiency (DLOR)	85%		

Model Ref.	Module Power (W)	Module Output (lm)	Module Efficacy (lm/W)	Luminaire Power (W)	Luminaire Output (Llm)	Luminaire Efficacy (Llm/W)	Colour Temp (K)	Colour Rendering (R _a)	UGR	Operating Ambient Temperature (°C)
74.001	9.3	1155	95.4	12.1	982	81.1	3000	>80	14.1	-25 to +35
74.002	9.3	1155	95.4	12.1	982	81.1	4000	>80	14.1	-25 to +35
74.003	13.6	1546	92.0	16.8	1314	78.2	3000	>80	15.1	-25 to +35
74.004	13.6	1546	92.0	16.8	1314	78.2	4000	>80	15.1	-25 to +35
74.005	19.5	2040	86.8	23.5	1734	73.8	3000	>80	16.1	-25 to +35
74.006	19.5	2040	86.8	23.5	1734	73.8	4000	>80	16.1	-25 to +35
74.007	29.3	3000	87.5	34.3	2550	74.3	3000	>80	17.4	-25 to +35
74.008	29.3	3000	87.5	34.3	2550	74.3	4000	>80	17.4	-25 to +35
74.009	11.9	1102	73.0	15.1	937	62.1	3000	>95	14.0	-25 to +35
74.010	11.9	1102	73.0	15.1	937	62.1	4000	>95	14.0	-25 to +35
74.011	17.0	1428	69.0	20.7	1214	58.6	3000	>95	14.9	-25 to +35
74.012	17.0	1428	69.0	20.7	1214	58.6	4000	>95	14.9	-25 to +35
74.013	26.4	2000	64.1	31.2	1700	54.5	3000	>95	16.0	-25 to +35
74.014	26.4	2000	64.1	31.2	1700	54.5	4000	>95	16.0	-25 to +35
74.015	34.1	2850	73.1	39.0	2423	62.1	3000	>95	17.3	-25 to +30
74.016	34.1	2850	73.1	39.0	2423	62.1	4000	>95	17.3	-25 to +30

74 Series Life

25°C Ta (Ambient Temperature)

Model Ref.	L80 / F10	L70 / F0
74.001	50,000 h	50,000 h
74.002	50,000 h	50,000 h
74.003	50,000 h	50,000 h
74.004	50,000 h	50,000 h
74.005	50,000 h	50,000 h
74.006	50,000 h	50,000 h
74.007	50,000 h	50,000 h
74.008	50,000 h	50,000 h
74.009	50,000 h	50,000 h
74.010	50,000 h	50,000 h
74.011	50,000 h	50,000 h
74.012	50,000 h	50,000 h
74.013	50,000 h	50,000 h
74.014	50,000 h	50,000 h
74.015	50,000 h	50,000 h
74.016	50,000 h	50,000 h

“**L VALUE**” = % of initial lumens maintained after specified time

“**F VALUE**” = % of fittings failing to meet operational expectations after specified time

EXAMPLE

- 60,000 hrs L80 / F10 = 80% of initial lumens maintained after 60,000 hours
= 10% of fittings will have less than 80% of initial lumens after 60,000 hours
OR
= 90% of fittings will have maintained 80% of initial lumens after 60,000 hours