

82 Series Datasheet

Modules



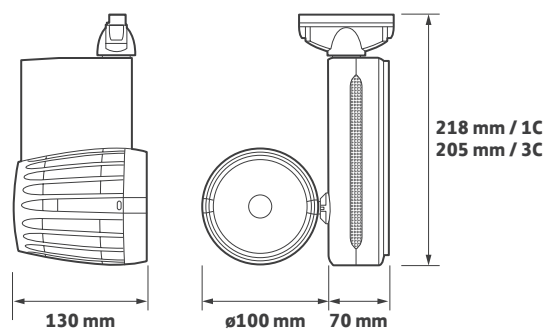
Fortimo SLM



Key Features

- ▶ High performance LED track luminaire
- ▶ Philips Fortimo SLM module and Xitanium driver for optimum performance
- ▶ High efficiency heat sink
- ▶ Multi-faceted reflector with a range of beam options
- ▶ Global Trac adaptor
- ▶ Life >50,000 hours (L70 / B10)
- ▶ 5 year warranty 50,000 hours

Technical Drawing



Ordering Information

Output	Power	Colour	Model Ref.
1275 lm	12 W	830	82.1101
1275 lm	12 W	840	82.1103
2000 lm	21 W	830	82.2001
2000 lm	21 W	840	82.2003
2750 lm	32 W	830	82.3001
2750 lm	32 W	840	82.3003
3700 lm	38 W	830	82.4501
3700 lm	38 W	840	82.4503

Options

Please select from the options below.

Single circuit track adaptor	/1C
3 circuit track adaptor	/3C
White	/WH
Black	/BL



82 Series Options and Accessories

Options



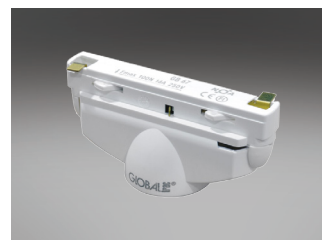
/24
Narrow beam reflector



/40
Medium beam reflector



/60
Wide beam reflector



/1C
Single circuit track adaptor



/3C
3 circuit track adaptor

Finish



/WH
White - RAL9016



/BL
Black - RAL9005

82 Series Options and Accessories

Options



/24
Narrow beam reflector



/40
Medium beam reflector



/60
Wide beam reflector



/1C
Single circuit track adaptor



/3C
3 circuit track adaptor

Finish



/WH
White - RAL9016



/BL
Black - RAL9005

82 Series Technical

Technical Information

Nominal weight	1.4 kg	Operating ambient temperature	-25°C to +35°C
Mains voltage	220 - 240 V	Mains lead	N/A
Mains frequency	50 - 60 Hz	Warranty	5 years
Ingress protection from front	IP20	Power factor	>0.9
Ingress protection from rear	IP20	Colour rendering	R _a 80
Optical efficiency for medium beam (DLOR)	84%	MacAdam	3 SDCM

Model Ref.	Module Power (W)	Module Output (lm)	Module Efficacy (lm/W)	Luminaire Power (W)	Luminaire Output (Llm)	Luminaire Efficacy (Llm/W)	Colour Temp (K)
82.1101	10.1	1469	118.3	12.4	1234	99.4	3000
82.1103	10.1	1577	127.2	12.4	1325	106.8	4000
82.2001	18.0	2286	108.3	21.1	1920	91.0	3000
82.2003	18.0	2452	116.2	21.1	2060	97.6	4000
82.3001	28.6	3155	98.0	32.2	2650	82.3	3000
82.3003	28.6	3385	105.1	32.2	2843	88.3	4000
82.4501	33.6	4250	112.1	37.9	3570	94.2	3000
82.4503	33.6	4567	120.5	37.9	3836	101.2	4000

Please note: Specification values may change due to rapid development of lighting technology. All performance data is taken at an ambient temperature of +25°C. Data may be rounded up/down for illustrative purposes. Tolerance range of optical and electrical data is +/-10%. We reserve the right to amend or change details without prior notification. E&OE. **MDS-104T-REV9 01/02/2017**

82 Series Life

25°C Ta (Ambient Temperature)

Model Ref.	L90 / B20	L80 / B10	L80 / B20	L70 / B10
82.1101	>50,000 h	>50,000 h	>50,000 h	>50,000 h
82.1103	>50,000 h	>50,000 h	>50,000 h	>50,000 h
82.2001	35,000 h	42,000 h	46,000 h	>50,000 h
82.2003	35,000 h	42,000 h	46,000 h	>50,000 h
82.3001	20,000 h	35,000 h	43,000 h	>50,000 h
82.3003	20,000 h	35,000 h	43,000 h	>50,000 h
82.4501	>50,000 h	>50,000 h	>50,000 h	>50,000 h
82.4503	>50,000 h	>50,000 h	>50,000 h	>50,000 h

“L VALUE” = % of initial lumens maintained after specified time
“B VALUE” = % of fittings that will have depreciated below the L value after specified time

EXAMPLE
50,000 hrs L70 / B50 = 70% of initial lumens maintained after 50,000 hours
= 50% of fittings will have depreciated below 70% of the initial lumens after 50,000 hours
OR
= 50% of fittings will have maintained 70% of the initial lumens after 50,000 hours