

ASTRO LINIALITE

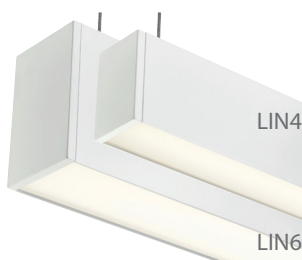
ASTRO LINIALITE IS AN INNOVATIVE MODULAR LED LUMINAIRE SYSTEM. DESIGNED TO PROVIDE UNINTERRUPTED LINES OF LIGHT FOR A RANGE OF COMMERCIAL AND ARCHITECTURAL APPLICATIONS. ITS CLEVER DESIGN ENSURES MINIMAL VISUAL IMPACT WITH MAXIMUM LUMEN EFFECTIVENESS.



July 2019

TWO SIZES

ASTRO LINIALITE is available in two sizes - 40mm width x 62mm depth (LIN4) and 60mm width x 93mm depth (LIN6).



Features:

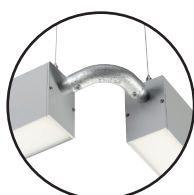
- Continuous lines of light
- Unique 'any angle' intersections
- Suspended, surface or recessed* mounting
- Diecast end cap
- 3m adjustable suspension kit
- Single or twin point suspension

Options:

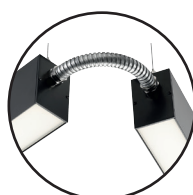
- DALI dimming
- Wireless operation
- Uplighting
- Integral presence detectors
- Standard, self-test and DALI emergency



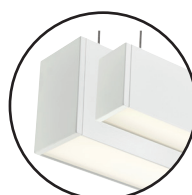
FABRICATED ANGLES



FIXED ANGLE



FLEXIBLE ANGLES



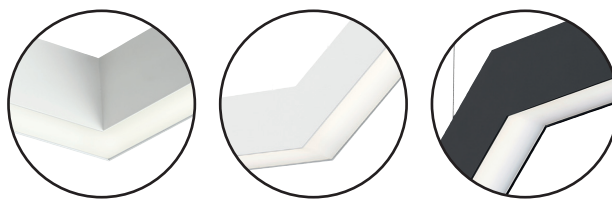
STRAIGHT LENGTHS

FLEXIBLE SYSTEM

ASTRO LINIALITE is our most flexible lighting system.

Intersections (with leg lengths of 300mm) welded and dressed, can be supplied to many specified angles (horizontally or vertically) and connected to form runs of almost any length.

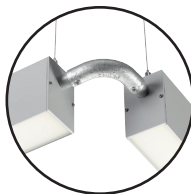
This unique property means ASTRO LINIALITE can provide a continuous lighting experience - even up a flight of stairs, along a winding corridor or following the contours of an irregularly shaped room.



FIXED AND FLEXIBLE CONNECTIONS

90° fixed and 'any angle' flexible connectors are available to give non-continuous lighting.

The connectors provide all power and control requirements thereby simplifying installation.



90° FIXED ANGLE

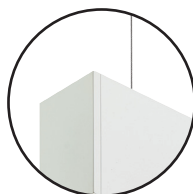


FLEXIBLE ANGLES

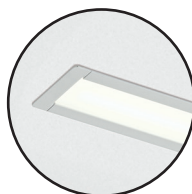
MOUNTING

can be suspended, recessed* or surface mounted.

*LIN6 only



SUSPENDED



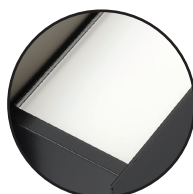
RECESSED



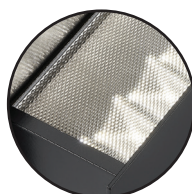
SURFACE

OPTICS available with three different optics as standard:

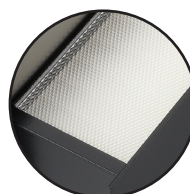
- Opal
- Microprism
- Diffused Microprism



OPAL



MICROPRISM

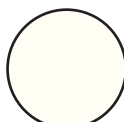


DIFFUSED
MICROPRISM

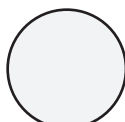
COLOUR

LINIALITE can be supplied as standard in pure white, traffic white, jet black and white aluminium.

Any colour from the RAL palette can also be supplied.



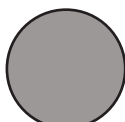
(RAL 9010)



(RAL 9016)



(RAL 9005)



(RAL 9006)



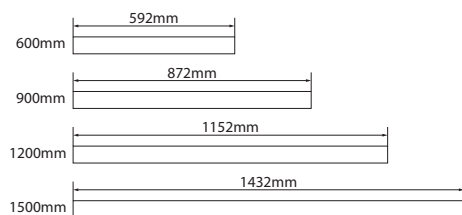
In accordance with its policy of continuous research and product development, the company reserves the right to amend or withdraw specifications without prior notice.

DIMENSIONS

ASTRO LINIALITE can be supplied as standard in two profile sizes and four lengths.

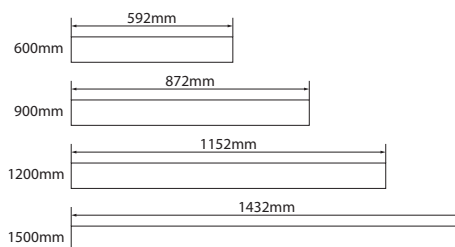
Nominal lengths are 600mm, 900mm, 1200mm and 1500mm.

LIN4 (40mm width) - surface and suspended



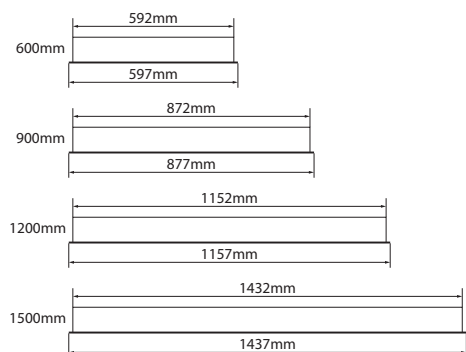
□ Profile: 40mm width x 62mm height

LIN6 (60mm width) - surface and suspended

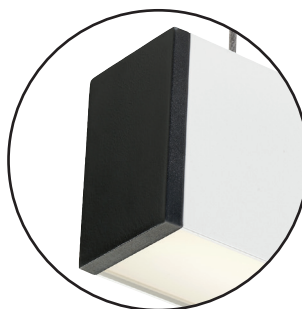
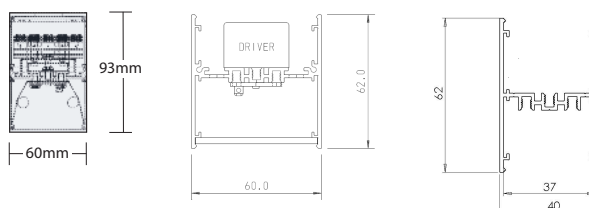
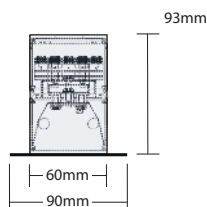


□ Profile: 60mm width x 93mm height

LIN6 (60mm width) - recessed



□ Profile: 60mm width (74mm frame) x 93mm height



In accordance with its policy of continuous research and product development, the company reserves the right to amend or withdraw specifications without prior notice.

DIECAST END CAPS

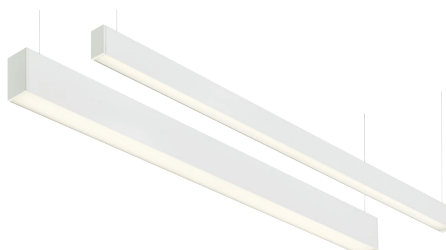
Die cast end caps have no visible fixings, thereby providing an attractive finish.

STANDARD LENGTHS

Standard nominal lengths of 600mm, 900mm, 1200mm and 1500mm.

Individual luminaire lengths up to 3 metres can be supplied.

Lengths in multiples of 300mm can be produced for your unique requirements.



Complete Lighting Services Limited

Rooksdown House, Southern Road, Basingstoke, Hants, RG21 3DZ

Tele: 01256 811600 Fax: 01256 811601 email: reception@completelighting.co.uk

