

LED Amenity Round

UTILISING THE LATEST LED TECHNOLOGY, THESE LUMINAIRES ARE PERFECT FOR PROVIDING LOW ENERGY/LONG LIFE LIGHTING SOLUTIONS FOR INTERIOR, EXTERIOR AND AMENITY APPLICATIONS

TECHNICAL DATA

March 2013



Features

- Cast Aluminium & Polycarbonate construction (Grey/Opal as standard)
- Halo effect lighting
- Attractive and robust design IP65
- Simple installation
- 20Watt; 1250lm LED

Part No

15605/P
15605/M3

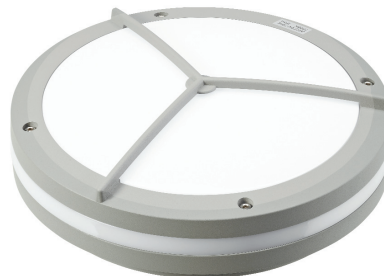
Lamp Configuration

20Watt LED (mains only)
20Watt LED (Maintained 3hour emergency)

Special Versions

15606/P
15606/M3

As above but with tri-guard
As above but with tri-guard



Tri-guard

LED Amenity Round

The Amenity luminaire provides an attractive but robust solution for providing lighting to walkways, tunnels, storage areas, car parks etc.

The enclosure is sealed to IP65 and houses a geartray with HF electronic driver and multi-circuit LED board.

The Polycarbonate lens and halo-effect, side band provide excellent photometric performance (1250 luminaire lumens).

The robust Cast Aluminium & Polycarbonate enclosure is vandal resistant and provides protection to IP65.

Suitable for ambient temperatures of up to 35°C (25°C for emergency versions) the units are ideal for interior and exterior environments.



SPECIFICATION

Light Source	LED (5000K)
Driver	High PF Electronic
Insulation Class	Class 1 — EN60598
Environmental Rating	IP65; Ta 35
Maximum Weight	2.7kg

