

## IP65 LED Bulkhead

### Brilas

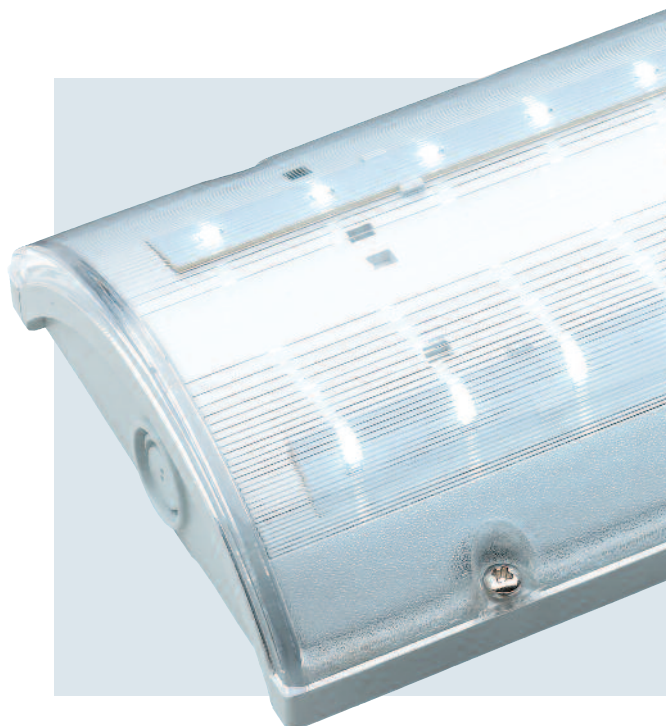
Neat and compact, the **Brilas** LED bulkhead utilises an IP65 rated polycarbonate base and lens specifically designed to maximise the distribution from the enclosed 16 high output white LEDs and appropriate drive circuit. The **Brilas** is available with a 'hanging blade' exit sign legend panel or self-adhesive legend kits.

#### OPERATION

The attractively designed **Brilas** bulkhead offers 120Lumen LED output with a distribution to ensure maximum spacing between luminaires.

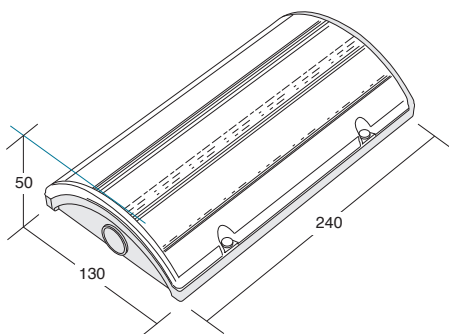
The **Brilas** luminaires are available with mains only or Maintained emergency operation. All emergency versions provide 3 hour duration from integral high temperature Nickle Cadmium batteries. Maintained versions can be used for standard switched mains lighting but will automatically provide emergency lighting in the event of a complete loss of normal mains supply.

The luminaires fully comply to the requirements of EN60598.2.22



#### GENERAL SPECIFICATION

Supply voltage	30Volt (220-240V) ~ 50Hz
Lamp	16 x 4200K white LED (CRI>80)
Supply Current	Maintained: 38mA (9VA max.) Mains only: 22mA (5VA)
Cable Entry	Drilling points in both ends and back plate
Geartray	Hinged white polycarbonate
Construction	White polycarbonate base / clear lens
IP Rating	IP65 ta25
Dimensions	240mm (L) x 130mm (W) x 50mm (H)
Weight	1.4kg



BR/M3/BLADE/ISOAU

## IP65 LED Bulkhead

### Emergency spacings (White base/Brilas lens)

Mounting height Hm (m)	Trans. to wall	Trans. to trans.	Axial to trans.	Axial to axial	Axial to wall	
2.5	3.0	7.8	7.2	6.8	2.0	1 Lux min. at centre
4.0	2.4	8.2	7.6	6.2	1.4	
2.5	5.1	9.8	9.2	6.5	2.6	0.5 Lux min. (open)
4.0	4.4	10.0	9.8	6.0	2.2	



BR/M3/BLADE/ISOAR



AV/M3

### ORDER CODES

**BR/M3**  
**BR/230**

### Description

Maintained emergency LED bulkhead luminaire  
Mains only LED bulkhead luminaire

### OPTIONS:

**/DALI**

DALI or Self-Test emergency operation

**/BLADE**

As above but with hanging blade Exit panel

### LEGENDS:

**/ECAR** EC format — Arrow Right/Left (for BLADE)  
**/ECAD** EC format — Arrow Down (for BLADE)  
**/ISOAR** ISO format — Arrow Right/Left (for BLADE)  
**/ISOAU** ISO format — Arrow Up (for BLADE)

### SELF-ADHESIVE SIGN KITS:

**/BR/LEG/KIT/EC** EC format Self-adhesive kit  
**/BR/LEG/ISOAR** ISO format Self-adhesive kit — Arrow Right  
**/BR/LEG/ISOAL** ISO format Self-adhesive kit — Arrow Left  
**/BR/LEG/ISOAU** ISO format Self-adhesive kit — Arrow Up