

# 68 Series Datasheet



## Modules



XICATO XTM

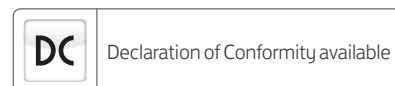
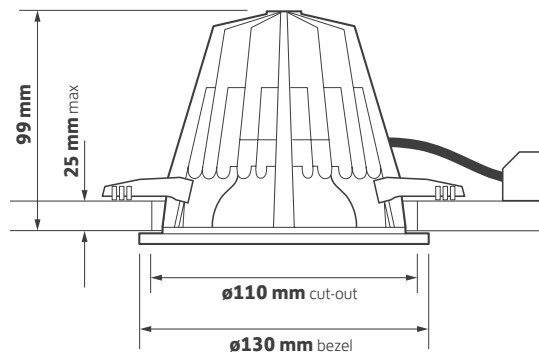


ø130 mm

## Key Features

- ▶ For superior light quality
- ▶ Height under 100 mm using optimised passive thermodynamics
- ▶ Die-cast twist and lock bezel with interchangeable accessories
- ▶ Satin etched medium beam reflector
- ▶ IP65 bezel option
- ▶ Various dimming options
- ▶ Emergency conversion options
- ▶ 5 year warranty 50,000 hours
- ▶ Short circuit, overload and temperature protection
- ▶ Comes with 500 mm supply lead

## Technical Drawing



## Ordering Information

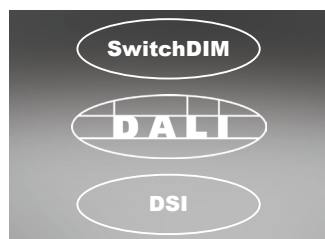
Output	Power	Colour	Model Ref.
825 lm	9 W	830	<b>68.001</b>
825 lm	9 W	840	<b>68.002</b>
1100 lm	14 W	830	<b>68.003</b>
1100 lm	14 W	840	<b>68.004</b>
1475 lm	19 W	830	<b>68.005</b>
1475 lm	19 W	840	<b>68.006</b>
2200 lm	30 W	830	<b>68.007</b>
2200 lm	30 W	840	<b>68.008</b>

## Options

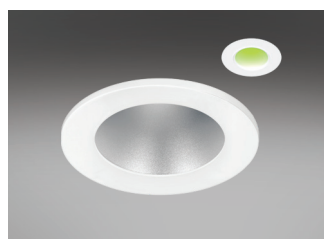
Please select from the options below.

TA200 bezel options	<b>/WH /CH /BA /BL</b>
High colour rendering	<b>R<sub>a</sub> &gt;95</b>
SwitchDIM, DALI, DSI	<b>/ECO</b>
EM conversion	<b>/EM</b>
Self-test EM conversion	<b>/EMS</b>
DALI EM conversion	<b>/EMD</b>
Integral indicator for EM conversion	<b>I</b>
Single Point Connection to an ILEM	<b>/SPC</b>
Please see accessories sheet	<b>Accessories</b>

## Options



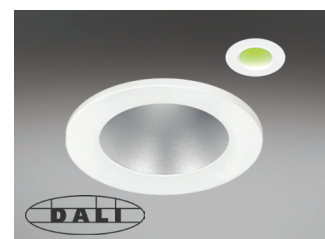
**/ECO**  
SwitchDIM, DALI or DSI



**/EM**  
EM conversion



**/EMS**  
Self-test EM conversion



**/EMD**  
DALI EM conversion



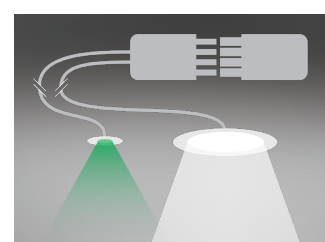
**/EMI**  
Integral indicator for EM conversion



**/EMSI**  
Integral indicator for self-test EM conversion



**/EMDI**  
Integral indicator for DALI EM conversion

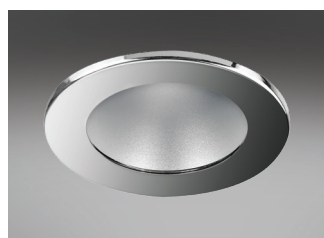


**/SPC**  
Single Point Connection to an ILEM product

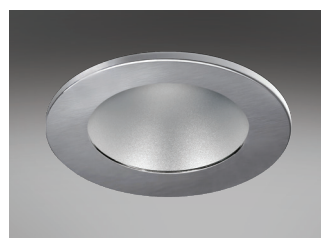
## Bezel Finish



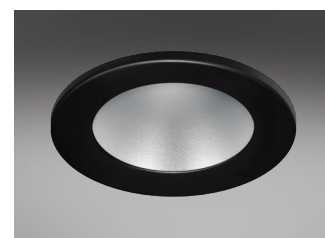
**TA200/WH**  
White bezel - RAL9010



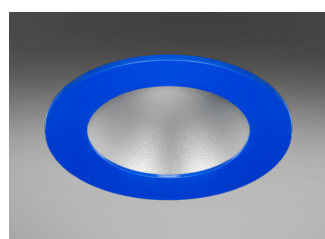
**TA200/CH**  
Chrome bezel



**TA200/BA**  
Brushed aluminium bezel



**TA200/BL**  
Black bezel - RAL9005



**Product variations**  
Other colours and specifications available on request

# 68 Series Datasheet

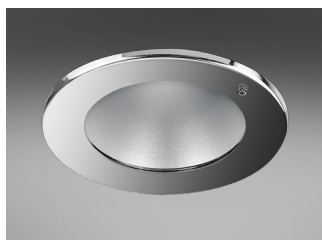


## Bezel Finish

Continued



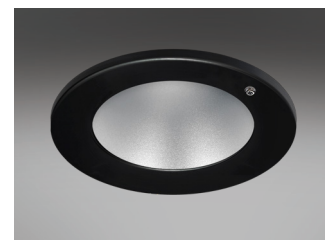
**AT200/WH**  
White anti-tamper bezel



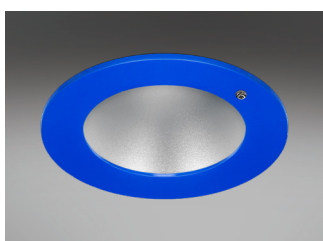
**AT200/CH**  
Chrome anti-tamper bezel



**AT200/BA**  
Brushed aluminium anti-tamper bezel



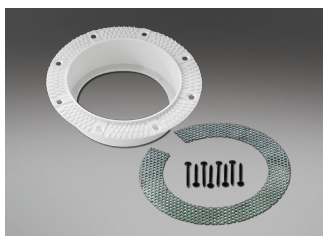
**AT200/BL**  
Black anti-tamper bezel



**Product variations**  
Other colours and specifications  
available on request

## Fixing Options

Available with selected accessories



**PI200**  
Plaster-in kit. Please see PI200  
datasheet for details.



**PI200**  
Installed kit and fitting. Please see  
PI200 datasheet for details.



**HALOKIT.001**  
Halo kit - maximum cut-out 150 mm

## IP65 Bezel



**IP65/001/130**  
IP65 clear polycarbonate

# 68 Series Datasheet



## Decorative Bezel

White /**WH** Chrome /**CH** Brushed Aluminium /**BA** Black /**BL**



**TA225/WH**  
White bezel complete with clear halo

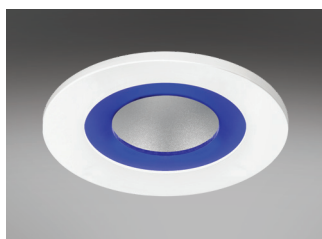


**TA226/WH**  
White bezel complete with opal halo

## Accessories



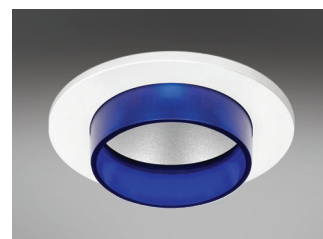
**TA220/FROST**  
Frosted hi-light



**TA220/BLUE**  
Blue hi-light



**TA210/FROST**  
Frosted vertical halo



**TA210/BLUE**  
Blue vertical halo



**TA206**  
IP54 Glass scatter dome



**TA240**  
IP54 Clear glass



**TA241**  
IP54 Centre etched glass



**TA242**  
IP54 Fully etched glass



**TA208**  
Kick reflector



**GF208 / GF218**  
Anti-tamper driver / Anti-tamper bit