

**DOUBLE LIGHT 140 EDIS**  
COD: E5593-LBN-25

Use:  
outside, led  
Installation:  
Wall mounted  
Body/structure:  
EN AB-47100 Die-cast aluminium body  
Coating:  
Polyester powder coating with special treatment for outdoor use

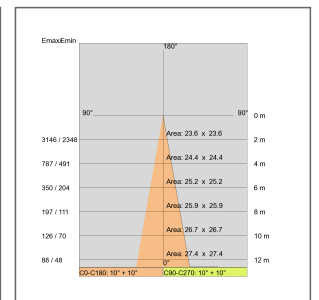
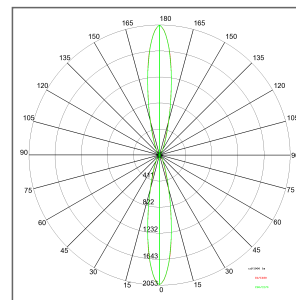
Colour:  
White  
Optic/reflector:  
Polycarbonate metallized reflector  
Equipment:  
Silicon rubber gaskets  
Glass/diffuser:  
Clear serigraphed tempered glass  
Cable gland:  
Silicon rubber cable gland PG11

Control gear:  
Integrated LED diodes ballast, stabilized output current 350mA dc








Voltage:	220-240V 50/60Hz
Beam angle :	Symmetric, double emission 24 Degrees
Insulation class:	Insulation class 1
Weight:	3,200 kg
IP rating:	65
Glow wire:	[850 °C]
Lamp included:	Yes
Kind of led:	Power LED
Luminaire wattage:	14.6 W
Luminous flux:	3196.2 lm
Lamp/led rated life:	50000 hours L80 B30
Colour temperature:	4000
CRI:	80
Color constancy:	4 SDCM

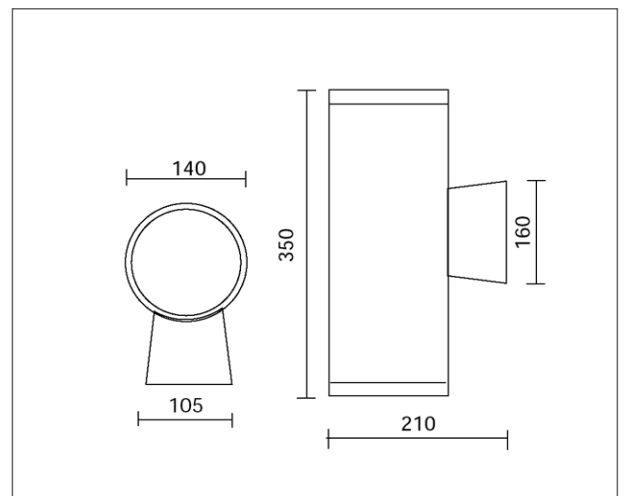
Notes:  
Photometry refers to an optical assembly

Review board: 03-02-2016



Lamp: 2 x LED 12.6 W 1780 lm



**DOUBLE LIGHT 140 EDIS**

COD: E5593-LBN-25

