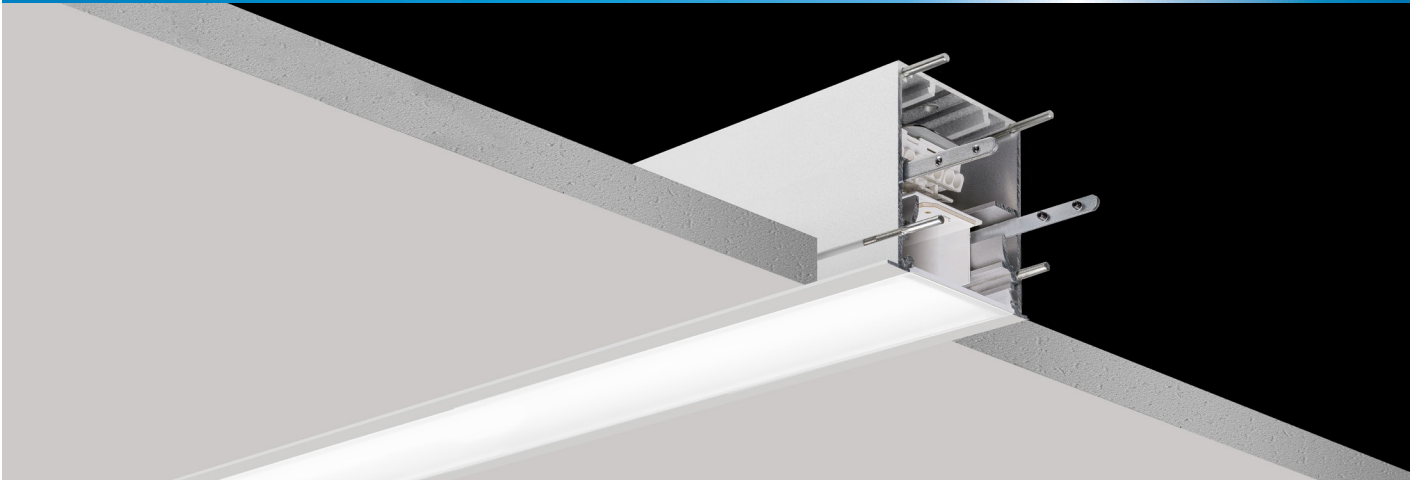


# 183 Series Datasheet

TRIDONIC  
TECHNOLOGY  
INSIDE

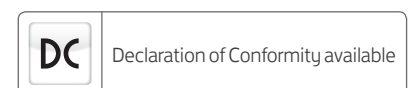
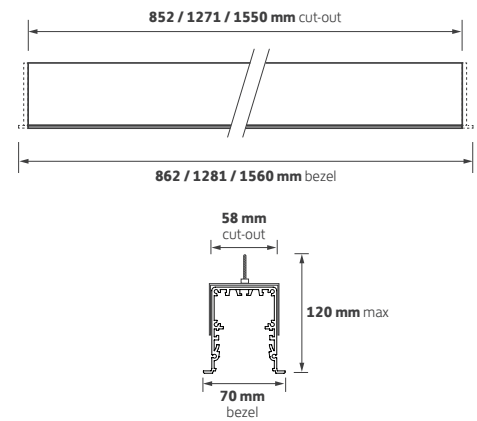
COMPLETE LIGHTING  
SERVICES LIMITED  
**CLS**



## Key Features

- ▶ Recessed, continuous linear profile system
- ▶ Through wiring in all lengths
- ▶ Tridonic LED and driver combinations
- ▶ TPa elegant opal lens for general areas as standard
- ▶ Low glare prismatic lens option for LG7 compliance
- ▶ Lumen depreciation L80/F10 @ >72,000 hours
- ▶ ECA compliant efficacies of up to 127 lm / tcW
- ▶ Available in 3 standard 'building block' lengths
- ▶ Manufactured, tested and validated in the U.K.

## Technical Drawing



## Ordering Information

Length	Colour	Luminaire output (lm) <b>Std</b>	Intermediate Model Ref.	Luminaire output (lm) <b>/LO</b>	Luminaire output (lm) <b>/HO</b>
850 mm	830	1725	<b>183.001</b>	1175	2725
850 mm	840	1825	<b>183.002</b>	1225	2875
1.2 m	830	2575	<b>183.003</b>	1750	4100
1.2 m	840	2725	<b>183.004</b>	1850	4300
1.5 m	830	3150	<b>183.005</b>	2150	5000
1.5 m	840	3325	<b>183.006</b>	2250	5250

## Options

Please select from the options below.

Pair of end caps	<b>SECAP</b>
1 x joining / through wire kit	<b>JKIT</b>
Lower output	<b>/LO</b>
Higher output	<b>/HO</b>
Low glare prismatic lens for LG7 compliance	<b>/LG</b>
SwitchDIM, DALI or DSI	<b>/ECO</b>
EM conversion	<b>/EMI</b>

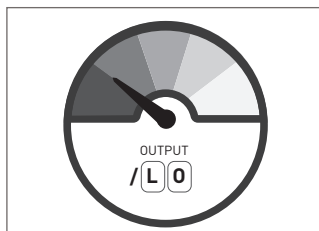
# 183 Series Options and Accessories



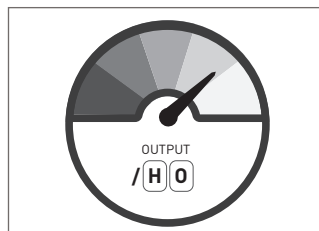
## Options



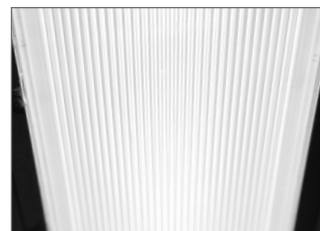
**SECAP**  
Pair of end caps



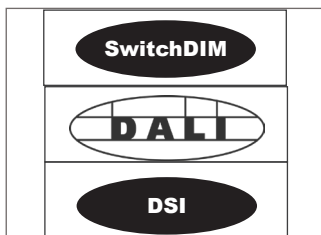
**/LO**  
Lower output



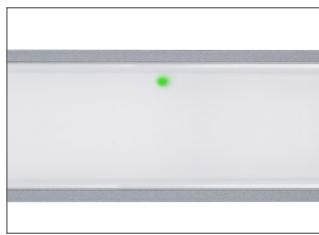
**/HO**  
Higher output



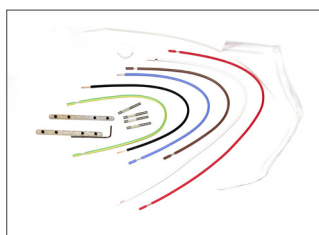
**/LG**  
Low glare prismatic lens



**/ECO**  
SwitchDIM, DALI or DSI



**/EMI**  
EM conversion



**JKIT**  
Joining / through wire kit



**PT001**  
Lens removal tool